



बड़ौदा यू.पी. बैंक
Baroda U.P. Bank

SHORT TERM TENDER NOTICE

(For Empanelled Furnishers & Interior Decorators only)

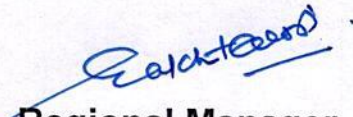
FURNISHING AND INTERIOR DECORATION WORK
IN BHARTHANA BRANCH OF BARODA U.P. BANK
REGIONAL OFFICE-ETAWAH

IMPORTANT DATES

DATE OF ISSUE OF TENDER NOTICE	23.10.2024
LAST DATE AND TIME OF SUBMISSION OF TENDER	14.11.2024 up to 01:00 P.M.
DATE OF OPENING OF TENDER (FINANCIAL BID)	14.11.2024 at 03:00 P.M.

Baroda U.P. Bank
Regional office AURAIYA
Pakka Bag Tiraha, AURAIYA
206001 (U.P.)

Date: 23.10.2024


Regional Manager

NOTICE INVITING TENDER

Sealed item rate short term tenders are invited on behalf of the Regional Manager, Baroda U.P. Bank, Regional office ETAWAH, from the Furnishers & Interior Decorators having valid Empanelment with the Baroda U.P. Bank for the work of INTERIOR DECORATION WORK IN **BHARTHANA** BRANCH OF BARODA U.P. BANK, Regional Office ETAWAH.

1. Issue of tender documents : 23.10.2024
2. Last date of receipt of tender documents : 14.11.2024 up to 01.00 PM
3. Date of opening of tender documents : 14.11.2024 at 03.00 PM
4. Place of submission & opening of tender : Baroda U.P. Bank, regional office pakka bag
Etawah
5. Period for completion of work from order date : Maximum 30 days
6. Retention percentage : 10% (Ten percent) from final bill
7. Defect liability period : 12 months from the date of
completion certificate issued by the
Bank Architect.
8. Release of retention money : After 14 days from defect
liability period.

SUBMISSION OF TENDER

The tenders are to be submitted in a sealed envelope and clearly super scribed as "Tender for FURNISHING & INTERIOR DECORATION WORK IN BHARTHANA BRANCH OF BARODA U.P. BANK, REGIONAL OFFICE, ETAWAH.

- Bids must be submitted through hand to hand or registered post only.
- The bid must contain two Envelopes as per procedure given below

FIRST ENVELOPE MUST CONTAIN ALL THE DOCUMENTS GIVEN BELOW:

1. Photo copy of PAN Number duly attested.
 2. Photo copy of GST Number duly attested.
 3. All the documents should be self attested along with stamp of the Firm.
- IT MUST BE MENTIONED ON ENVELOPE "DOCUMENT SUBMITTED FOR BID OF FURNISHING & INTERIOR DECORATION WORK IN AURAIYA BRANCH".

SECOND ENVELOPE MUST CONTAIN ALL THE DOCUMENTS GIVEN BELOW:

SECOND ENVELOPE MUST CONTAIN only bid and nothing else.

- The price must be submitted on the prescribed format
- Price bid will not be accepted on any other format or document.
- It must be clearly mentioned "PRICE BID OF FURNISHING & INTERIOR DECORATION WORK IN AURAIYA BRANCH".

BOTH TWO ENVELOPES MUST BE KEPT IN THIRD SEALED ENVELOPE AND SUPERSCRIBED "BID FURNISHING & INTERIOR DECORATION WORK IN BHARTHANA BRANCH".

GENERAL INSTRUCTIONS TO TENDERERS

1. The term "Contractor" shall mean the successful tenderer to whom the Contract shall be awarded.
2. The Contractor should quote the rates in figures and words. Any corrections or Over-writing should be initialed by the Contractor.
3. The Contractor should submit the tenders with seal, signature and date on each Page.
4. The Contractors should submit the cost of the main items as per tender specifications. Further modification after awarding of the contract shall be not allowed unless there is specific instruction by the Bank/Architect to change specifications.
5. The contract is time-bound and the works are to be completed within the time limit specified in the notice inviting tenders. This is a working office and the contractor has to work with no or minimum obstruction to its regular services.
6. The decision of Bank and the Architect is final and binding.
7. The contractor must submit registration certificate of both work i.e. 'furniture & fixture work' and 'Electric & data cabling work' in separates envelope must be mention "Technical Bid for furnishing & electrical work".
8. The contractor must submit the tender for both work i.e. 'furniture & fixture work' and 'Electric & data cabling work', partially filled tender will be rejected.
9. For Electrical fixtures and light points required as per drawings the contractor has to draw the wires from the existing positions of light points, power points wherever and if applicable. The contractor shall submit the certificate from electrical contractor holding required license/certification from directorate of electrical safety (U.P.)/competent authority of any other State.

TERMS & CONDITIONS

1. Unless otherwise mentioned, all works are with no allowance for Lapse waste. Unless otherwise described or measured separately, price for all the items shall include all necessary straight & curved edges.
2. Any damage to the work before the site is handed over, is to be replaced or made good at the expense of the contractor to the entire satisfaction of the Architect/Bank.
3. Income Tax, Other Tax as applicable shall be deducted at source as per the Income Tax Act / Rules.
4. The quantities indicated are subject to change. The payment of the bill shall be made as per the actual measurement as certified by the architect but not exceeding the total value quoted in the tender form.
5. The Architect or any officer of the Bank will be free to inspect the work at the site during the period of execution. Any suggestion of change or modification to improve the quality of work will be carried out subject to prior approval of the competent authority of the Bank and that of the Architect.
6. In case of failure to take up the work even after accepting the work order, or leaving the work incomplete, or for defective work not rectified, or violation of the terms and conditions, the contractor will be de-paneled/blacklisted.
7. For any item of work not covered or any unforeseen items of work, payment will be made according to the rates approved for similar nature of work, the costing done by the Architect, as per current PWD schedule of rates, or as per analysis of material cost, labour rate and profit to the Contractor at 10%. The Contractor must obtain prior approval in writing before undertaking such additional works.
8. The tenderers shall sign each & every page of the tender documents including the drawings attached here to.
9. The amount is to be quoted in figures as well as in words. In case the rates quoted in words and in figures are in variance, the amount written in words shall be taken as final.
10. The Contractor shall make their own arrangement at their own cost for storing materials, plants, tools etc. The Bank will not be liable for security of the Contractor's materials.
11. No tools or plants will be issued by the bank.
12. The Bank / Architect reserves the right to accept or reject any tender without assigning any reason whatsoever and the said decision shall be final and binding upon the tenderer.
13. In case of breach of contract by the Contractor for slow progress of works or any other claim of damage, the bank or the Architect may have the power to rescind the contract without furnishing further reasons thereof.
14. The Architect shall have the power to ask the contractor to furnish the sample/ color / test certificate from any Govt. /Authorized agent for any materials used/ to be used in the Works, the expenditure of which is to be borne by the Contractor.
15. The Bank shall not be liable for any damages or compensation payable as a consequence of any accident or injury to any workman or other persons in the employment of the Contractor or any sub-contractor.
16. On completion of the Works, all rubbish, debris, materials, tools, Laborers, etc. to be removed by the contractor from the site and the contractor will hand over the site clean & clear & in usable condition within 3 days of completion of the works. Failing this, the bank may dispose the materials at the cost of the contractor.
17. In case of any dispute, the matter will be referred to the Regional Manager, Baroda U.P. Bank, Regional Office Etawah-206001 (UP).
18. Final Payment after completion of Project will be done with the certificate of Architect with deduction of retention money by the Bank.
19. The rates quoted in the tender shall exclude GST only but include all excise tax, octroi & other taxes, no escalation of rates will be allowed under any circumstances.

Bill of Quantity for Furnishing works for Baroda U.P. Bank

At Bharthana, Etawah

1.No offsite prefabrication shall be allowed in any case. All fabrication shall be done at the site after getting the materials inspected by the architect

2.No payment shall be made for any in completed or unsatisfactory work

3.The Contractor should strictly follow the Booklet requirements of the Bank

including the detailed drawings in the booklet. Any discrepancy between the booklet and the Specifications below should be brought to the notice of the Architect.

4.List of material to be strictly as per the booklet.

5.Cable Managers to be provided in the tables and Counters wherever required.

6.All underframe should be properly treated with antitermite and waterproofing material

7.All Locks in the drawers and doorsetc. should be of Godrej

8.All keyboard Trays and Drawers to be on Channel Sliding Mechanism.

9.Etching to be provide as per Banks Design and Specification.

S.No.	Item	Units	Qty.	Rate	Amount
	In case of full height partitions measurement of height shall be taken from the finished floor level upto the level of the false either side of the partition ceiling, in case of varying heights on average height shall be considered.				
	The rate to include provision of extra framework as necessary for skirting & making provision for laying conduit as/drgng & directions of site engr./architect. All underframing to be treated with antitermite solution chlorpyrifos based in recommended dilution.				
1	Full height glazed/Unglazed partition including door as per design All partitions to have etching/3M film as per the design of the Architect.	Sqft	98.00		
	Glazed Partition (upto false ceiling height only considered and above necessary ceiling supports to be provided) with Anodized Aluminium frame work, heavy sections (2mm thickness) of 2"x1.5" section, spacing of 2'0"x2'0" on bothsides and covered with 9mm thick BWP plywood of standard make finished with 1mm thick laminate of banks colours for skirting & borders on both sides and approved colour laminate for base colour on both sides. Above 1'0"/2'6"/3'0" height partition, fixed with 8mm toughened glass with etching/ film of 3M as per design and teak wood beading of size 1.5" /0.5" with melamine polish. Rate to include providing cutouts and provisions to run electrical conduits, switches, etc. Cost include wastages, transports, loading, unloading charges, labours, materials, tools, lead, lift and etc. Complete as per drawings and instructions of the Architect.				
	The job shall also include for provision of laying conduits, switch boxes, etc. The erection of partition shall include for expansion bolts cleats, clamps bolts, nuts, screws, rivets and other accessories, all complete up to the satisfaction of the Architect.				
	The partition and doors shall have hinges floor springs /sliding arrangement / hydraulic door closer, mortise locks with handle set (Godrej, Dorma make all), etc. The rate shall include cost of all materials, labour, T&P, wastages, etc. required for proper completion of work, all complete to the satisfaction of the Architect.				

	Full height Solid partition (height 8'-6" or ceiling height) with Anodized Aluminium frame work, heavy sections (2mm thickness) of 2"x1.5" sections, spacing of 2'0"x2'0" on bothsides and covered with 9 mm thick plywood finished with 1mm thick laminate of approved colour for skirting & borders and laminates for base on both sides with all necessary fixing accessories, arrangements and etc. Partition shall have necessary opening of approved size as per standards for fixing machine's and additional frame to be fixed for strengthening the partition. Rate to include providing cutouts and provisions to run electrical conduits, switches, etc. Cost include wastages, transports, loading, unloading charges, labours, materials, tools, lead, lift and etc. Complete as per drawings and instructions of the Architect. This would include provision of teak wood chaukhat for provision of semi glazed glass door with logo of Bank.				
2	Low Height Partition. Block partition till 3'-0" and glazing from 3'-0" to 4'-6". Glazing to be toughened etched/3M film.	Sqft	225.00		
	Half Height partition to be made with Anodized Aluminium frame work, heavy sections (2mm thickness) of 2"x1.5" sections, spacing of 2'0"x2'0" on bothsides and covered with 9mm thick BWP plywood finished with 1mm thick laminate of approved colours for skirting & borders and white colour laminates for base on both sides with all necessary fixing accessories, arrangements and etc. Partition shall have 12mm thick etched/3M film glass and fixed with teak wood beading with melamine polish. Clear glass shall be finished with frosted film sticking over the glass of approved pattern and design. Rate to include providing cutouts and provisions to run electrical conduits, switches, etc. Cost include wastages, transports, loading, unloading charges, labours, materials, tools, lead, lift and etc. Complete as per drawings and instructions of the Architect.				
3	P1-(Full Ht.7'-0" for Cash Cabin) (Aluminium Decorative Grill Partition)	Sq.Ft.	122.00		
	For Cash Cabins				
	Providing and fixing of Cash Enclosures at height of 7'-0" with Anodized aluminium frame work, heavy sections (2mm thickness) of 2"x1.5", spacing of 2'0"x2'0" on bothsides and covered 6mm thick BWP plywood finished with 1mm thick laminate of approved colour. Partition shall have provision for opening and 19mm BWP plywood tray for challan receiving purpose. Cost include aluminium grill and fixed with teak wood beading and duco paint. Cost also include 3 Nos of Solid core flush Doors with sizes of 2'6"x7'0", fixed in the partition. Door shall have teak wood beading and lipping with duco paint. Door finished with 1mm thick laminate of approved colour for skirting of approved pattern. Door shall have 8mm glass fixed with teak wood beading and duco paint. Rate to include hardware's like brass hinges, godrej three nos of night latch, door closure, door stopper and handles. Cost also include cash transaction opening shall be provided with door arrangements made with BWP plywood frame work finished by laminate, duco paint and locking system. Cost include wastages, transports, loading, unloading charges, labours, materials, tools, lead, lift and etc. Complete as per drawings and instructions of the Architect.				
	Decorative Grill (12mm thk)-hexagonal opening as per instruction of Bank's Engineer/Architect.) All exposed edges of Plywood shall be fixed with 1/8" C.P. Teak Lipping.				
	Other Specification as per partition P1				
4	Aluminium Grill Top (With Wooden Support)	Sqft.	47.00		
	On cash cabin top				

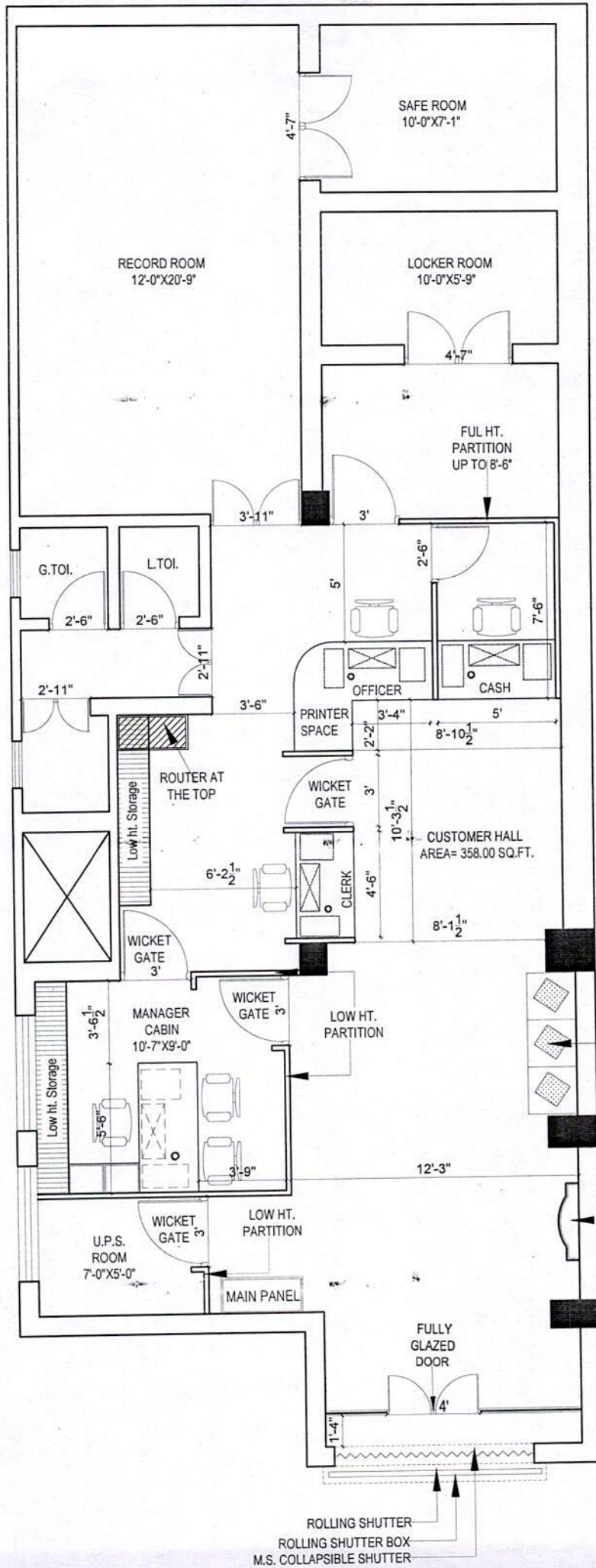
	Providing and fixing of aluminium grill with square size 75mm x 75mm - 8mm, on top of the cash cabins etc. The grill shall be tightly stretched and nailed to a wooden frame work, made out of 50mm x 40mm teak/ hard wood (with anti-termite) members at 750mm c/c approx. both ways or as per site conditions. The erection of framework shall include for expansion bolts cleats, clamps bolts, nuts, screws, rivets and other accessories. All teak wood surfaces shall be painted with two coats of synthetic enamel over one coat of primer. The rate shall include cost of all materials, labour, T&P, wastages, etc. required for proper completion of work, all complete to the satisfaction of the Architect.				
5	P5- Wicket Gate Solid	NO.	1.00		
	(Banking Hall) SS finish Hinges				
	Size-3'-0" X 4'-0"				
	Board-19mm thick (MR Grade IS303)				
	(Incl Door Closer/Stopper)				
6	Front Counter	Rft	17.00		
	A. Running counter as per the drawing				
	Providing & Fixing clerical counter made out of 19.0mm thick ply (as per list of materials and Drawing) frame work for top, verticals, shelves, apron, sides, drawer unit, shutters, side units, customer top, foot rest, 12.0 mm thick ply (as per list of materials for drawer sides, sliding shutters, front apron & 6mm thick ply for side unit back, drawer bottom, drawer unit back along with necessary 2" X 2" or 2" X 1.5" of laminate matching imported wood molding & teak wood supports for fixing of top. The clerical counter shall have 2'-6" in depth & counter shall have two tops i.e. one at 2'-6" for writing and second at 3'-0" for customer in height finish in approved make/color black granite of top on the counter. complete. The clerical counter shall have 1 No. of key board tray, 2 Nos. of equal drawers or as per the Bank requirements & one open able shutter. All exposed surfaces i.e. apron, counter side etc. finish with approved make/color 1.00mm thick laminate & moulding finish with 3 coats of melamine polish and internal surfaces shall have zinc oxide polish along with necessary approved Stainless Steel				
	Hinges, Ball Catches, Stainless Steel Locks, approved design Stainless Steel Handles, Stainless Steel Powder Coated Grommet (wire manager) Wood Foot Rest (Movable) Earl-Bihari make Twin Telescopic Channel, CPU Hanger/Trolley INNOFIT make etc. complete as per detail drawing and Instructions of the Bank's Engineer/Architect				
	this item shall have hinges floor springs/sliding arrangement/hydraulic door closer, mortise locks (Godrej make all), etc. The rate shall include cost of all materials, labour, T&P, wastages, etc. required for proper completion of work, all complete to the satisfaction of the Architect.				
7	Cash Counter	Rft	5.00		
	A. Cash counters as per the drawing				

	Providing and fixing into position Cash counters as per detailed drawing made of Phenol bonded 19mm thick BWP commercial board finished with 1.0mm thick BWP laminate on top, front and sides as per detailed drawing. The front member of the cash counter to continue to 3'-8" height. At 3'-8" m height a projection of 15cm extended towards the customers side while a projection of 25.5 cm will be extended towards the staff. The outward projection to be made of 19mm thick phenol bonded commercial board finished with 1mm thick laminate top. The counter to have one drawer unit of 3 drawers & space for CPU. 2 drawers to have division for cash as banks specifications. The exposed edges to have TW beading as in the design.				
	The item included all hardware such as channels of glydo/hettich / flyrail, self closing hinges/ locks/ handles/ laminated keyboard tray, Other hardware etc. The exposed surfaces to be finished with 1mm thick laminate of approved shade. Provision of footrest to be made as specified. All exposed wooden surfaces to be finished with clear melamine polish as approved by the Architect. All unexposed surfaces to have synthetic enamel paint with primer, all complete as per detailed drawings and direction of the Architect. The counter to have provision for cable manager and keeping mouse.				
8	12mm thick Glass for Cash Cabins and Front Counter with etching	Sq.Ft.	45.00		
	Supplying and fixing 12mm thick toughened glass in bank front counter's and cash counter front side of approved length and width and fixed with "D" bracket and all necessary fixing accessories, arrangements and etc. Each glass shall have four nos of "D" bracket. Cost include edge machine polish in glass. Cost include making holes for transaction purpose for each glass, wastages, transports, loading, unloading charges, labours, materials, tools, lead, lift and etc. Complete as per drawings and instructions of the Architect. Measurements shall be made actual laid quantity in SFT.				
9	Main Door Powder Coated Aluminum with fixed window glazing Powder Coated. Only 8'-6" ht. etching as per bank norms	Sq.Ft	105.00		
	P/F aluminium entrance door with powder coating as per bank colour code. section 2mm thick glazed aluminium door, 4'-0" x 2" Al. section including locks floor spring tower bolt, mortice locks, floor spring of (Hyper, Everite, Amar) etc. as per design and as per direction of the Architect. All sections to be of (Jindal, Hindalco and MK) along with SSC-shaped handles of kitch or equivalent make along with, mortice locks floor spring of (Hyper, Everite, Amar) make. The item also includes door lock completed to the satisfaction of the architect. The Glazing to be 8 mm thick glass with etching as per design. This also includes the fixed glazing on both the sides of the entrance door (Ultra Shutter Lock No1920(MS) / 5478 (SS). (INCLUDE ENTRANCE DOOR TOP TO BE BLOCKED BY 6 MM PLY AND IT IS NOT INCLUDE THE MEASUREMENT)				
10	Storage (Full Height / Low Height) /Over-Head storage	Sqft	52.00		

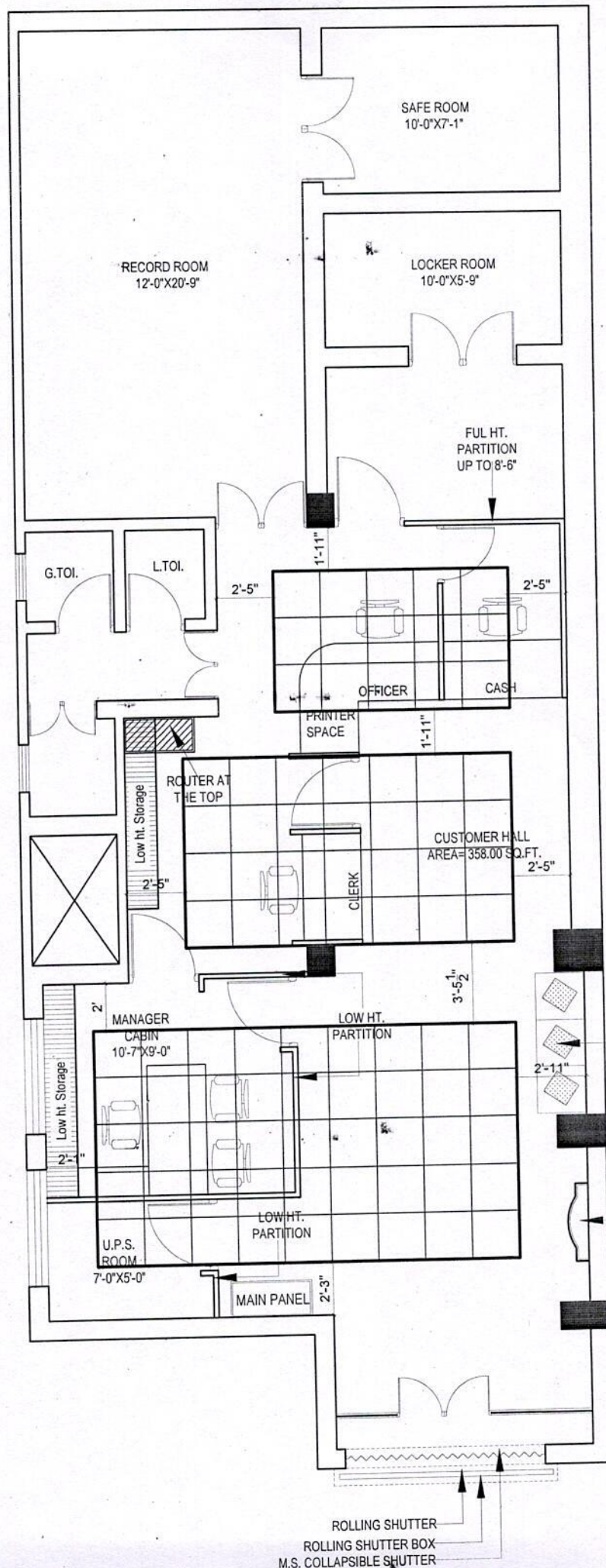
	Providing and fixing Full height/(Low Height) /Over-Head storage e 400mm deep made out of 19mm BWP block board finished with 1.0mm laminate in alleposed areas. The drawers to be made out of 19mm BWP block board in the front cladded with 1.0mm laminate (color, vertical grain). sides to be made out of 12mm BWP plywood and bottom made out of 6mm BWP plywood duly painted in matching tone and it should play on drawer sliding channels. The shutters to be made out of 19mm BWP block board and should play on drawer sliding castors on powder coated channels. The necessary locks, handles, etc to be provided. Inside of the unit to be enamel painted in matching tone. All the exposed edeges of the boards/plywoods to be coverd with wooden lippings/mouldings duly polished all complete. The work to be completed as per approval and specifaicaon of the Architect.				
	Handle-Brush finish stainless steel as per IS				
	Lock- Godrej				
	Internal surface zinc oxide polish and other required accessories instructed by Bank's Engineer/Architect.				
11	Manager Table with side table with 12 mm thick bevelled glass on top.	No	1.00		
	Size-5'-6" X 2'-6" X 2'-6"				
	Providing Table in position, Top shall be made of 19mm thick BWP comm. Board finished with 1.00mm thick laminate 1 ¾" x 1" teak wood beading as per design on all sides. The sides shall be made of 19mm thick BWP comm. board finished with 1.00mm th laminate as per design. with teak wood lipping on all exposed ends of sides The front apron shall be made of 19mm thick BWP comm. board finished with 1.00mm thick laminate as per design The drawers to be made out of 19mm thick comm. BWP board duly laminated in the front, sides to be made out of 12mm BWP comm. plyw and bottom to be made out of 6mm BWP comm. ply and it should play in drawer sliding channels. The inside of the drawer and the table to be duly paint. laminated. A legrest to be provided duly paint made out of 3"x2" thk wooden section. A shutter to be made by 19mm BWP comm. board cladded with 1.0 mm laminate. The necessary locks handles to be provided in each drawers and shutters. On top of the Branch managers table 12mm thk glass to be placed duly edge polished. The table should have key board tray and tea tray duly finished with 1mm laminate. The necessary wire managers to be provided on the tables and provision for lights to be kept if required in the front of the table. (One coat of Ant termite treatment oil)				
	Side Table-3'-0" X 1'-6" X 1'-6"				
	Ply Wood-19.0mm thick BWP				
	Supports-2" X 2" & 2" X 1.5" CP Teak Wood and beading Patti				
	Drawer-1'-6" wide two drawers and one shutter below the drawers at left side of the table and two drawers at side table and below two shutters				
	Laminate-1.0mm thick approved colour				
	Key Board Tray-Metal INNOFIT make				
	CPU Metal Stand, Twin Telescopic Drawer Fittings, Brass Powder Coated Wire Manager				
	Handle-Brush finish stainless steel, Brass Ball Catches 12.0 thick plain glass with edge polish at top of the table (Other Exposed Edge of Ply with half round beading with approved colour polish)				
	False Ceiling				
12	Mineral Fiber ceiling with UNI T 15mm T Grid & 16mm MPRESSIONS™ ClimaPlus™ Ceiling tiles (600x600mm)	Sq.Ft.	352.00		

	<p>This includes USG Knauf UNI T 15mm grid Wall angle of 19mmx 19mm x 0.40mm shall be screw fixed to brick wall/partition with the help of approved screws at 600mm centres. Then suspending USG Knauf UNIT 15mm Main T grid of 15mm x 38mmx0.30mm of length 3600mm is hung with USG Knauf adjustable level clips 80x30x 0.70mm & 4mm diameter GI rod which are connected to USG Boral Soffit Cleat 37mmx27mmx1.6mm and 8mm dia 40mm long Anchor Fasteners @1200mm centres or as approved from RCC Slab. The USG Boral UNIT 15 Cross T of 15mm x 38mmx0.30mm of 1200mm length shall be interlocked between main T Grid at 600mm centres to form 1200 x 600mm modules. 600 x 600mm modules to be formed by click fitting USG Knauf UNIT 15 Cross T of 15mm x 38mm of 600mm length centrally between the 1200mm cross T's Then 16mm thick IMPRESSIONS™ ClimaPlus™ ceiling panel having FLB edge of size 595x595 shall be placed into the above grid of size 600x 600 mm.This ceiling panel confirms to ASTM E84 surface burning characteristics. (Class A, Flame Spread: 25 & Smoke developed: 50). The Ceiling panel provides NRC 0.60, CAC minimum: 33. Light Reflectance: 0.84, recycled content -45% Thermal Resistance: R- 0.3 & can withstand Relative Humidity up to RH 99% (limiting conditions–Max 49 degree C/99%RH). The front & back side of the tile has anti- Microbial ZOE coating</p>				
13	False Ceiling Works (Gypsum)	Sq.Ft.	530.00		
	<p>Supplying and Erecting Saint Gobain Gyproc Gypboard false ceiling at different heights with saint gobain framewrk of G.I. Section (of medium thickness) of spacing 4'0"x2'0" above with 12.5 mm gypboard shall be fixed with all necessary fixing accessories, arrangements and etc. Rate shall include cut-outs for lights, ac and etc.The ceiling shall be putty finished and sanded to form clean and homogeneous surface. Cost include hidden lighting arrangements and etc. Rate to include painting two coats of acrylic emulsion of approved colour after necessary preparation, one coat of primer, full putty and etc. Cost include all necessary hardwares like nails, screws, wastages, transports, loading, unloading charges, labours, lead, lift, materials, tools and etc. Complete as per drawings and instructions of the Architect.</p>				
14	Vertical Blinds	Sqft	28.00		
	<p>Providing & fixing MARVEL/Vista make as approved by Bank's Engineer/Architect with runner, thread and other accessories</p>				
15	Writing Table & Brochure Holder, Cheque Drop Box, Suggestion Box with Notice Board. (The work shall be executed as per design and Elevation.)	No.	1.00		
	<p>Providing and fixing in position a writing counter with open storage made of 12mm and 19mm thick ply/ commercial board finished with 1.0mm laminate and teak wood moulding/lipping with a 6mm glass top with polished edges as per drawing and design. The glass to be of size to fit internally and the19mm border and 6mm lipping to be flushed with the glass.The storage unit shall consist of vertical space dividers of 12 mm board with 1.0 mm laminate till the glass top for the provision of holding withdraw/deposit slips stationery etc. The counters to be held in position around the columns by dash fastners at a height of 3.5/ 4 ft. Notice board with cellotex base & cloth bound in corporate coloured binded with teak wood lipping of 35 by 12mm. size 1500X1200. All wooden surfaces to be finished in clear melamine polish and all unexposed sides to be finished in enamel paint of approved colour to be approved by the designer all complete as per detailed drawing, specification and direction of the Engineer in Charge.</p>				
16	Column Pannelling & wall panelling Branch	Sqft	145.00		

	Column Panelling -upto false ceiling height only considered and above necessary ceiling supports shall be provided) with Anodized Aluminium frame work, heavy sections (2mm thickness) of 2"x1.5", spacing of 2'0"x2'0" on bothsides and covered with 9mm thick BWP plywood finished with 1mm thick laminate colours for skirting & borders,. Rate to include providing cutouts and provisions to run electrical conduits, switches, etc. Cost include necessary hardwares likeclamps, screws and etc. Cost include provisions for electrical db closing 19 mm BWP plywood door arrangements, wastages, transports, loading, unloading charges, labours, materials, tools, lead, lift and etc.Complete as per drawings and instructions of the Architect.				
	Wall Panelling-upto false ceiling height only considered and above necessary ceiling supports shall be provided) with Anodized Aluminium frame work, heavy sections (2mm thickness) of 2"x1.5", spacing of 2'0"x2'0" on bothsides and covered with 9mm thick BWP plywood finished with 1mm thick laminate colours for skirting & borders,. Rate to include providing cutouts and provisions to run electrical conduits, switches, etc. Cost include necessary hardwares like clamps, screws and etc. Cost include provisions for electrical db closing 19mm BWP plywood door arrangements, wastages, transports, loading, unloading charges, labours, materials, tools, ead, lift and etc.Complete as per drawings and instructions of the Architect.				
17	Shutter Boxing with A.C.P.	Sqft	158.00		
	Frame Work-2" X 2" X 1.5 mm thick Aluminium Tubular section (Horizontal/Vertical) Jindal Make				
	Aluminium Composite Panel-3.0mm thick of approved colour with bonding material				
	With trap door				
18	Meter Boxing with proper locking system, 2 nos. of air-con louvers & all necessary accessories	Sq.Ft.	45.00		
	Boxing to be done up-to false ceiling				
	Manufacturing, supplying and fixing box type metre storage with overall depth of 1'6" and height up-till the false ceiling,. comprising of the following.				
	19mm block board hinged double shutter, height as size of the panel with alround beadings 3/4" x 1/2", powder coated handles, piano hinges, magnetic ball catches, lock, locking arrangement, tower bolts etc., all as per directions				
	All visible surfaces to be fixed with 1.0mm thick lamination sheet with matching grains & grooves as per instructions.				
	All internal & rear surfaces to be painted with two coats of enamel paint over a coat of primer / putty as directed to get a smooth finish.				
	This would include the fixing of 2 aluminium air-con louvers on both shutters.				
	Meter Boxing (Only front face to be measured for payment purpose)				
	Total Amount				
Note: All rates are excluding G.S.T.					



ROLLING SHUTTER
 ROLLING SHUTTER BOX
 M.S. COLLAPSIBLE SHUTTER



ROLLING SHUTTER
 ROLLING SHUTTER BOX
 M.S. COLLAPSIBLE SHUTTER

BARODA U.P. BANK**LIST OF MATERIALS OF APPROVED BRAND AND/OR MANUFACTURER**

1. The contractor shall use materials in their work subject to inspection, prior to dispatch, by Owner or his authorized representative of any materials not otherwise specified, shall be in accordance with the following list. All materials not otherwise specified shall be in accordance With the latest Indian Standard Specifications, where such exists with prior approval of Owner /Architects. The contractor shall be bound to offer sample of materials, which are claimed to be conforming to I.S Specification, for testing at an approved testing laboratory.
2. Contactor shall purchase all materials from the makers or their authorized stockist only. Necessary documentary evidences must be produced to the Owner or their authorized Representative on demand.
3. Contractor shall be bound to supply items or any make of the items as per the choice of the Owner/ Architects.

A CIVIL / FURNISHING WORK

S.No	Description	Approved Brand/ Manufacturer
1.	Cement	M/s ACC, M/sPrism ,M/s Jaypee
2.	Wood	First class Steam beach wood or as specified
3.	Polish	MRF Polyurethane
4.	Termite treatment	Chloroporyphos 20% concentration / Dusban /Terminator pidlite make
5.	Soft Board	Celotex
6.	Flase Ceiling and Sections	Grid Tiles ---Armstrong, St Gobain Gypsum India,
7.	Aluminium sections	Hindalco, Jindal, Indal
8.	Vitrified Floor tiles	RAK Asian, Regent, Kazaria, nitco
9.	Block boards / Plywood/Flush doors	M/s Green (BWP) Tajpuria (BWP), M/s Century BWP, No alternate brands from the same manufacturer allowed
10.	Laminates	M/s Green, lam (New Mika), M/s Merino, M/s Century, M/s Archid ,Sunmica
11.	Hardware-(Aluminium)	Approved design, brand, quality & manufacture allowed
12.	Hardware	ALL HARDWARE TO ONLY GODREJ
13.	Drawer/ cabinet Handless/locks	Dorset / Kitch/ Godrej/ hettich
14.	Magnet Catcher	Supreme, Excel
15.	Drawer / cabinet shutter Accessories	Ebbco, Hettich, Hafele
16.	Synthetic Enamel Paints, Distemper or Plastic paint Best quality of make as approved	Asian Paints Ltd), Berger Paints (India) Ltd.(Luxol), ICI, Nerolac.
17.	Venetian blinds/ verticals	vista
18.	Glazing	M/s Modiguard, M/s asahi india, Saint Gobain.
19.	Door Closer/ floor spring	Godrej, Dorma, Ozone
20.	Glue Adhesive	Fevicole, Century
21.	Door handles/ Locks	Godrej
22.	Screw	Excel GKW
23.	Glass brass bracket	Flora, Perfect
24.	POP bag or readymade work	Diamond (Super fine quality)
25.	GI section for Partitions, Panel, false ceiling	Same Company as of Gypsum Bard or Mineral Fibre tiles
26.	Film	Alkor, Garware, 3M
27.	Plants	
28.	Wire management holes	Twinkle
29.	Cement Board	E board, Bison,
30.	Vitrified floor tiles adhesive /	Bal Endura, Dr. Fixit Fevimate XL with Polymer

	Grout	Modified Mortar, ROFF Granite tile adhesive
31.	Texture	Spectrum , Heritage, Acro paint
32.	Upholstery	Raymonds
33.	Sanitary Fixtures	Cera, Hindware, Parryware
34.	GI Pipes and accessories	TATA
35.	CI Pipes and accessories	NECO
36.	Plumbing Fittings	Jaquar Continental series
37.	Ceramic Tiles	Kajaria (High Lighter Concept)

Bill of Quantity for Electrical & AC Piping works for Baroda U.P. Bank

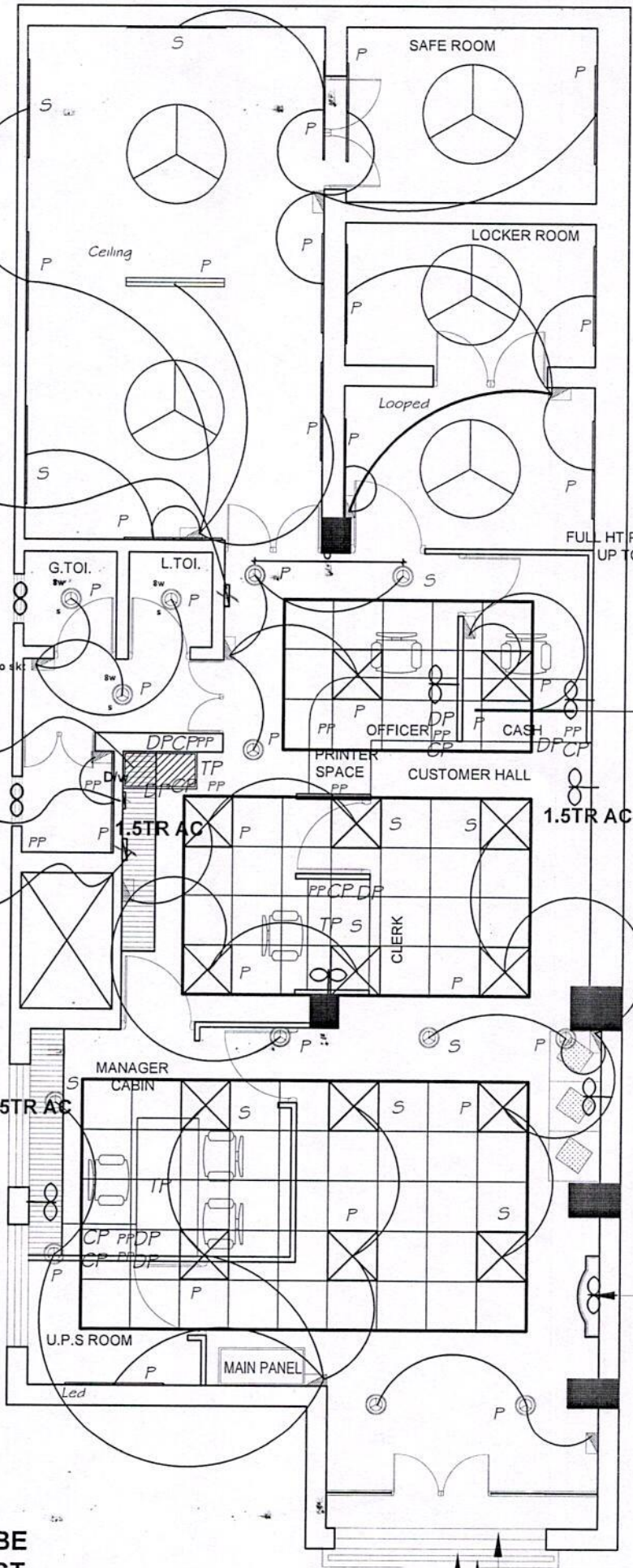
at Bharthana, Etawah

S.No.	Particulars	Qty.	Unit	Rate	Amount
1	SITC of 100Amp Kit kat Fuse unit 3 nos with 100 Amp neutral link on wooden board (3' x 3') complete with connections (new).	1.00	Set		
2	ELECTRICAL PANEL				
	Design, manufacture, providing, storing & installing in position, effecting proper connection, testing and commissioning of panel made of 14 SWG, CRCA sheet steel. It shall be dust and vermin proof. It shall have compartmentalized construction with bus bar chambers, cable alley, cable glands plate etc. as required, duly painted from inside as well outside.				
2	It shall have followings 1 No. 100 Amp. TPN, MCCB (10 KA breaking capacity), Busbars. 100 Amp., 3 phase, 4 strips, 415 volts, 50 Hz, copper busbars with colour coded PVC heat shrinkable sleeves. Instruments. Multi function Meter for Voltage, Ampere, Power factor, KWH, Data 1 No. with CT 75/5 Outgoing. 3 Nos. 63 Amp. 4P MCB (Power AC DB, Branch UPS DB and One Spare) 2 Nos. 25 Amp. 4P MCB (For Light/Fan DB & Spare Feeder) 10 AMP DP MCB. 3 Nos (for Glow Sign board, 1 spare and Strong Room Lighting) 1 No., 100 Amp. Four Pole Change Over for D.G. Set. (Seperate from the panel)The design of panel should be got approved by the Architect before manufacturing.The job shall be completed, to the satisfaction of the Bank Engineer/Architect. Any deviation in specification/ distribution shall be viewed seriously.	1.00	Set		
2a	Change over outside Panel - S/F of 100A TPN changeover in SS enclosure	1.00	Nos.		
3	UPS I/P, O/P AND DISTRIBUTION				
a.	SITC of 40/32 AMP 2P industrial socket along with DPMCB for UPS & Inverter I/P	3.00	Nos.		
b.	SITC of 32AMP 2P industrial socket along with MCB for UPS & Inverter + (ATM If available) O/P	3.00	Nos.		
c.	SITC of 12 WAY SPN DB Double Door (1 No. 40 AMP DP MCB and 10 NOS. 6-10 AMP SPMCB) (Branch UPS Power Distribution for UPS Points at 1 Manager Cabin (2nos.), Router (2nos.) and Staff counters (3nos.). Two adsjacent computer nodes can be controlled thru one MCB	1.00	Nos.		
c2	SITC of 4 WAY SPN DB Double Door (1 No. 32 AMP FP MCB for UPS supply	1.00	Nos.		
d.	SITC of 12 WAY SPN DB Double Door (1 No. 40 AMP DP MCB and 10 NOS. 6-10 AMP SPMCB) (Branch UPS Power Distribution for UPS Points at Manager Cabin (2nos.), ATM (1No.) and Staff counters (6nos.).	3.00	Nos.		
e.	SITC of 63Amp Rotary Phase selector switch complete with RYB indication lifht in incloser complete in all respects as required. (Branch UPS) Salzer	2.00	Nos.		
4	RAW POWER & FAN, LIGHTING DB & AC DISTRIBUTION BOARD				
a.	4 WAY TPN DB Double Door (1 No. 20 AMP TP MCB and 12 Nos. 6-10 AMP. SPMCB in each outgoing circuit for Light, Fan & 6A Socket) all complete.	1.00	Nos.		
b1	As above but 6way TPN Db Double door for AC & PP	1.00	Nos.		

5	CABLES				
a1	SITC of 4 Core 16 Sq.mm Aluminium Armoured Cable (From Electric Meter to Electric Panel), complete with end termination and all respect as required.	25.00	Mtr.		
b.	SITC of 4 x 6.0 Sq.mm Copper Wire + 1 x 4.0 Sqmm Copper Earth Wire (Panel to UPS Incomer, LDP) in PVC Pipe fixing on walls or chassing the walls and making it good with cement mortar of 1:5 ratio and painting compete with end termination/lugs and in all respect as required.	30.00	Mtr.		
c.	SITC of 4 x 10.00 Copper Wire + 1 x 4.0 Sqmm Copper Earth Wire (Kit Kat fuse unit/ Main Panel to AC / POWER DB) in PVC Pipe fixing on walls or chassing the walls and making it good with cement mortar of 1:5 ratio and painting compete with end termination/lugs and in all respect as required.	25.00	Mtr.		
d.	SITC of 2 x 6.0 Sq.mm Copper Wire + 1 x 2.5 Sqmm Copper Earth Wire (Rotary Switch to UPS and UPS to UPS DB) in PVC Pipe fixing on walls or chassing the walls and making it good with cement mortar of 1:5 ratio and painting compete with end termination/lugs and in all respect as required.	25.00	Mtr.		
e.	SITC of 2 x 2.5 Sq.mm Copper Wire + 1 x 2.5 Sqmm Copper Earth Wire (Electric Panel Glow Sign Board) in PVC Pipe fixing on walls or chassing the walls and making it good with cement mortar of 1:5 ratio and painting compete with end termination/lugs and in all respect as required.	15.00	Mtr.		
6	AC POINT				
a.	Point Wiring with 2 No. 4.0 Sq.mm and 1 No. 2.5 Sq.mm Multistrand Copper Wire & 20/25 Amp. Metallic plug & Socket DB complete in all respect as required by the Bank (for 1.0 & 1.5 Tr Split AC)	3.00	Nos.		
7	EARTHING				
a.	PIP technology GEL type 50mmdia 3000mm long earth electrod. One Earthing for Neutral grounding, One earthing for Panel body grounding, One earthing for UPS body grounding, One for UPS output	3.00	Nos.		
b.	12 SWG Bare Copper Earth Wire from earthing pit /Earth terminal to load point (UPS DB and Main DB etc)	45.00	Mtr.		
8	UPS POINT				
a	Supply & Installation of point wiring for Primary UPS or stabilized power plug points on workstations / table for computers using 3 x 1.5 Sq.mm copper conductor multi starnd FR PVC sheathed flexible wire pulled through floor raceways/conduit and taken upto table top using PVC rigid or flexible conduits run within wooden/metal partitions. Each point consisting of 2 nos of 10A 3 pin sockets, 1 nos 16A 2/3 pin sockets, 1 nos 16A Switch (Modular) & 1 nos indicator, wired together forming one point. The earth wire of green color only. No secondary UPS Points to be made.	7.00	Nos.		
9	RAW POWER POINT 16A SOCKET POINT IN WALL ONLY				

a.	Supply & Installation of point wiring for Primary Raw power plug points on walls only for computers using 2X4+1X2.5 Sq.mm copper conductor PVC sheathed flexible wire pulled through already laid floor raceways and taken upto table top using PVC rigid or flexible conduits run within wooden/metal partitions. Each point consisting of 2 nos of 16A 2/3/5 pin socket & 2 nos 16A Switch (Modular), wired together forming one point. The earth wire of green color only. No secondary Points to be made.	11.00	Nos.		
10	LIGHT/FAN POINT				
	Supply & Installation of concealed point wiring using 600v grade 1.5 Sq.mm copper conductor PVC insulated wires (with proper R,Y,B color code) pulled through heavy gauge PVC conduits laid concealed over false ceiling including 2 Nos. 2.5 sqmm circuit wires from the relevant DB and also including 2.5 sqmm green color copper earth wire and switch plate, switches, etc. as approved by the Bank's Engineer/Architect.				
a.	Primary light points including the cost of 10 A modular switch	35.00	Nos.		
b.	Secondary light points looped from the primary point (For Down Lights & Tubelights only, Two downlights from one point)	13.00	Nos.		
c.	Ceiling Fan Point including the cost of 10A modular Switch along with 4/5 step electronic fan regulator.	5.00	Nos.		
d.	Wall Fan Point along with 10 AMP modular switch	7.00	Nos.		
e.	Exhaust Fan Point along with 10 AMP modular switch	2.00	Nos.		
f.	6/10A Switch with 5pin 10A socket in counter, light & fan board	11.00	Nos.		
11	DATA CABLING & POINT THERE MUST BE MINIMUM 3FEET DISTANCE BETWEEN DATA AND				
	Supplying and laying of D-Link make CAT-6 (UTP) cable through trenches / conduits.				
a.	Supplying and laying D-link make CAT-6 Cable complete with CAT-6 information outlet with plate & surface Box at individual Tables	7.00	Nos.		
b.	Supplying and fixing of 2 mtr long crimped patch cord	7.00	Nos.		
c.	Supplying and fixing of 1 Mtr long crimped patch cord	7.00	No.		
d.	Dismantling & re-installation of rack, patch panel & switch etc. as required including wire manager, power supply card, hardwares etc. complete in all respects	1.00	Job		
12	VOICE NETWORKING				
a.	Supply and fixing of 10 pair telephone MDF consisting of tag blocks, disconnecter type, complete with powder coated metal enclose, krone tag block mounting arrangement telephone distribution chart and locking arrangement [for P&T/EPABX]	1.00	Job		
b.	Supplying and laying telephone cables 0.5mm dia 2 pair electrolytic tinned copper conductors PVC insulated and twisted pair with rip cord, through PVC conduits/Raceways and RJ11 telephone socket outlet. The rate shall include termination at both ends on tag blocks.				
(i)	2 Nos. RJ11 Telephone socket with plate and box (1-Manager Cabin, 1- Advances, 1-Audit Officer, 1-Cash Officer)	3.00	No.		
13	FIXTURES				
	SITC of following fixtures as per make list				
a.	LED Square Light (2' x 2') fitting (white) - 36 Watts Philips LED Recessed Panel Light Square.36W (RC370B LED30S-6500)	14.00	Nos.		

b.	LED Down Lighter (white) - 9 Watts Philips Aura Style Edge 10w Led Downlighter, (Round Recessed Thin Trim, 47mm)	10.00	Nos.		
c.	LED Tube Light Patti Type (white) - 18 Watts Make/ Brand as per MAKE LIST	17.00	Nos.		
c2	As above but 2*18w LED Fitting ceiling mounted	1.00	Nos.		
d.	Ceiling Fan - 900mm Make/ Brand as per MAKE LIST	5.00	Nos.		
e.	Wall Mounted 80/100 watt metal body Fan - 450mm, 1300 to 1500RPM Make/ Brand as per MAKE LIST	7.00	Nos.		
f.	Exhaust Fan Metal Body - 300mm Make/ Brand as per MAKE LIST	2.00	Nos.		
g.	Call Bell Wireless	1.00	No.		
h.	S/F of surface light LED 8w	3.00	Nos.		
i.	To provide four separate indicator bulb which are installed on panels and should be visible to CCTV at all times with the following arrangement: Indicator 1: UPS supply for other gadgets like PCs, printers, lights, etc should be routed through this bulb. Indicator 2: input to Lighting DB should be routed through this bulb. Indicator 3: Input to power DB should be routed through this bulb for more clarity Single line diagram has been attached	1.00	Job		
AC PIPING WORK					
	All a.c.'s to be inverter type.				
14	Drain Water Piping Constructed out of PVC Hard Pipes, fitting, accessories, bends, elbows, tees, hanger, support, anchors, ISI approved Finolex/Prince Make (32mm)	28.00	RM		
15	Copper Piping Refrigerant along with insulator Piping for Hi Wall 1.5 ton, 1/2 and 1/4 Soft Copper Refrigerant piping with complete fitting, elbows bends supporting arrangements Nissan, Merchant, MET tube, Totaline tube, pressure tested tube and S.I.T.C. of 12.5 Sq.mm. & 6.25 Sq.mm. dia. Copper refrigerant pipe with foam Insulation between Indoor & Out door units with breaking of wall for making hole wherever required For Split Air-Conditioners. And S.I.T.C. of 19 mm dia & 16 mm dia Copper Refrigerant Pipes with Foam insulation between Indoor & Out door units. with breaking of wall wherever required for 2-3 Tr Cassette/Inverter Air conditioners.	50.00	Rm		
b	S.I.T.C. of 4 core Copper conductor flexible cable between Indoor & Outdoor Unit through holes made as above	53.00	Rm		
	Total				
Note: All rates are excluding G.S.T.					



UPS 12way
SPN Db

ROUTER AT
THE TOP

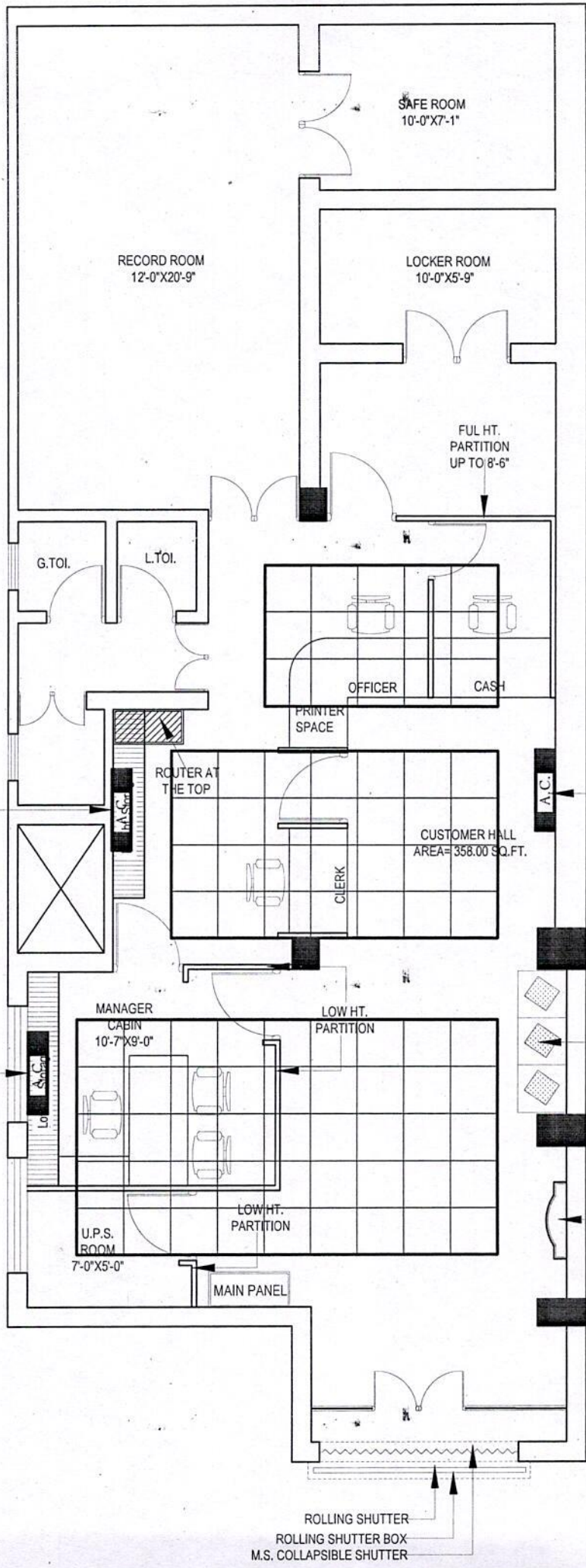
L & F 4way
TPN Db

1.5TR AC

1.5TR AC

**Db & AC LOCATIONS TO BE
APPROVED BY ARCHITECT**

ROLLING SHUTTER
ROLLING SHUTTER BOX
M.S. COLLAPSIBLE SHUTTER



SPLIT
AC 1.5 TR

SPLIT
AC 1.5 TR

SPLIT
AC 1.5 TR

CUSTOMER
SEATS

WRITING LEDGE
WITH NOTICE
BOARD

ROLLING SHUTTER
ROLLING SHUTTER BOX
M.S. COLLAPSIBLE SHUTTER

ELECTRICAL		
1.	MCCB	MDS legrands, ABB, GE, SIEMENS, as per Specification
2.	Changeover	Indo Asian/ HPL Socomec / GE/ Standard stangaurd/ as per Specification
3.	Distribution board	MDS / Standard / Indo Asian / HPL/ as per Specification
4.	MCB	MDS / Standard / Indo Asian / HPL/ as per Specification
5.	Cable	Gloster / Rallison / Incab / CCI/ as per Specification
6.	Copper wire	Rallison / Finolex / Polycab / R.R. Cable /as per Specification
7.	Switch / Socket / Call bell and accessories	Anchor / Havells / CPL / MDS / Philips / Simon/ as per Specification
8.	Electrical Light Fittings / Fixtures Complete	LED-Crompton / Panasonic
9.	Wall Fan / Ceiling Fan / Exhaust Fan	Ceiling Fan =Bajaj / Crompton Wall Mounted Fan= Crompton / Alstrom (Metalic Body)

NOTE: In case any make is mentioned in bill of quantity, it will take precedence over those given in the Given in the "Acceptable Makes of Materials" above.

The choice of make at a specific site will have to be consent with the project architect.

**Abstract of Cost for Baroda U.P. Bank
at Bharthana Etawah.**

S.No.	DESCRIPTION	AMOUNT (Rs.)
1	FURNISHING WORKS	
2	ELECTRICAL & DATA CABLING AND AC PIPING WORKS	
	TOTAL (Rs.)	

Note: All rates are excluding G.S.T.