



बड़ौदा यू.पी. बैंक
Baroda U.P. Bank

Regional Office: Chandauli
Mo.: 9450240760

Ref: BUP Bank/Rochan/P.E./Furnishing/137/2024-25

Dated: 15.05.2024

TENDER NOTICE

Baroda U. P. Bank, Regional Office, Chandauli intends to invite Tender from bonafide empanelled contractors for the proposed interior work of **Nai Basti branch** at H.No. 915, Bechupur, Near Gurudwara, P.O.- Mughalsarai (**Chandauli Region**), Pin Code: 232101, District- Chandauli, U.P. as per enclosed offer BID/BOQ profarma.

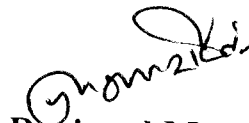
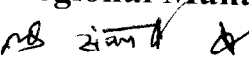
The completion period of work will be **30 days from the date of issue of order**. The work shall be executed under the supervision of our consulting Architect and as per specification demonstrated in offer BID Profarma/BOQ.

Offer BID Profarma/BOQ is attached with this notice. Offer should be valid for a minimum period of 120 days from the last date of submission. No brokerage shall be paid. The sealed covers marked as Bid superscribing "**FURNISHING WORK, ELECTRICAL WORK & LAN CABLING WORK BID FOR NAI BASTI BRANCH**" be put in one sealed cover/ packet addressed and submitted to **The Regional Manager, Baroda U. P. Bank, Regional Office- Chandauli, G.T.Road, Alinagar, Post- Mughalsarai, District- Chandauli, Pin Code- 232101** on or before dated **07.06.2024 by 4.00 P.M.**

- * **Tender start date: 15.05.2024**
- * **Tender end date : 07.06.2024 (4.00 P.M.)**
- * **Date and time of opening of Bid: 07.06.2024 (4.30 P.M.)**

Any decision taken by Bank at any point of time in connection with this process shall be final and conclusive and no claim or dispute from any quarter in that regard shall be entertained.

- **Please note that Retention money @10% of cost value will be hold, which will be payable after one year if no adverse comment is noted.**
- **TDS will be deducted as per GOI and I.T. Act norms.**
- **LI will be decided on total amount of combined total work (Furnishing, Electrical & Data cable work).**


Regional Manager




क्षेत्रीय कार्यालय, अलीनगर, मुगलसराय, चन्दावली-232001, दूरभाष: 05412-251036 / 37 / 38

Regional Office, Alinagar, Mughalsarai, Chandauli-232001, Telephone: 05412-251036/37/38

e-mail: ROCHAN@barodauprrb.co.in

**Schedule of Quantity Tender for furnishing work of of Baroda U.P. Bank Nai Basti Branch
Dist-& R.O. Chandauli**

S.No.	Items of work	Qty	Unit	Rate	Amount.(Rs.)
1.	Bank Low ht. Counter 2'-6'' Wide Made out of 19mm thick Board with drawer unit and Front side 12mm thick Etching Glass supported with teak Wood Or Aluminium member with 1.0mm thick Laminate on the top & drawer unit shall be Provided on one side while with space for CPU By its side. Pull out tray on slide shall be Provided on each counter for keeping keyboard. All the exposed edges shall have 6 mm th. TW Lapping duly polished. Inside surface shall be Enamel painted two coats over primer coats. It Shall be locks & handles etc. Provision for wire Management shall be made. Complete work as Per branch Manager/Architect Satisfaction.	10.00	Rft.		
2.	P/F of Bank Cash Counter in partition two level Cash counter 5'-0'' long (with 3'-10'' and 2'-6'' Height) counter for customer to be 1'-6'' wide And counter to be 3'-0'' wide with drawer unit Made out of 19mm thick board with 1.0mm thick Laminate on top and front and other internal Surface to be painted/Polished complete as per Item no. 1	8'-0''	Rft.		
3.	P/F of Cash cabin partition front-over the counter Supported on 2'x1-1/2'' sal- wood frame work				



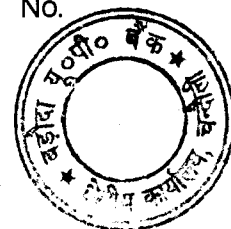
- Cover with 8.0 mm thk. Etching glass supported of
 1''x1/2'' beading with book window in size 5''x6''
 Center of the counter with 2''x2'' spacing aluminium
 Grill will be fixed in front of
 Partition side partition supported 2''x1-1/2'' sal
 Wood well seasoned structure with a cost of anti
 Termite treatment up to 3'-0'' height framing of
 Inside area with 2''x1-1/2'' sal wood section
 2'-0''c/c horizontal and vertical with both side
 6mm thick ply & 1.0mm thick laminates both side.
 The upper portion up to 4'-0'' height shall be of
 2-1/2''x2''x2-1/2'' Aluminum grill will be fixed
 Complete with all accessories and labour. 122.00 Sft.
4. P/F of **B.M Cabin full & Low Ht. (4'-6'' High)** partly glazed
 Laminated portion in **AdvanceManager/R.D.O Cabin**
 The under framing shall be of 2''x2'' sal wood
 (Anti termite Treatment) for under framing at
 A max. Distance of 2' in each direction. 6mm th.
 Waterproof ply shall be fixed on two side and
 1mm the laminated shall be pasted over it with B
 Chemical adhesive. Provision shall be made for
 .Passage of electric / data cable and switch board.
 T.W molding melamine polished shall be fixed
 Wherever necessary. Bottom 4'' width shall
 Have skirting upper 1'-6'' height shall have
 5mm thk. Plane glass. 295.00 Sft.
5. P/F of Low Ht. (4'-6'' High) Laminated portion
 For **UPS Space** The under framing shall be of
 2''x2''sal wood (Anti termite Treatment) for
 Under framing at a max. distance of 2' in each



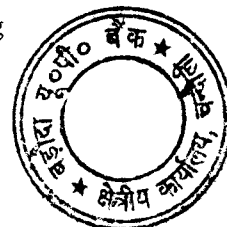
- Direction . 6mm th. Waterproof ply shall be
Fixed on two side and 1 mm the laminated shall
Be pasted over it with chemical adhesive. 62.0 Sft.
6. P/F Low ht. partition **Wicket gate** all
Specification as item No. 4. 14.00 Sft.
7. Providing and fixing in position double leaf
Powder coated **Aluminium entrance door**
Made of 14 guage thick sheet. All member
Shall be of 4''x1-3/4'' section and bottom
Rail shall be of 5''x1-3/4'' section with 6mm
Thick clear sheet glass including 4'' dia 2.0
Nos handles 10'' long 2.0 Nos, Tower bolts,
Floor spring 2.0 Nos lock etc. complete. 104.0 Sft.
8. P/F **Godrej Night latch.** 2.0 Nos.
9. P/F f **Godrej mortic lock** 2.0 No
10. P/F of **Door closer** I.S.I mark 4.0 No.
11. Providing and fixing **Writing desk** in
Position box type Wooden writing in public
Space of approximate size 4'-0'' x 2'-0''
Made out of 19mm thick good approved
Quality ply with 6'' to 9'' wide pigeon hole
Type compartments in the front façade boxing
For keeping pay-in-ship, book literature etc.
These writing table's must have laminates
1.0 mm thick on top writing desk and two side
of the boxes. With beeding lipping, moulding
and painting / polishing complete. 1.0 No.
12. Suggestion Box 1.0 No.
13. Check drop Box 1.0 No.



14. Providing and fixing **Aluminum grill** in cash
Cabin Grill size 2'-1/2''x2''x2'-1/2'' will be
Fixed complete with all accessories & labour. 64.0 Sft.
15. Providing and fixing in position **Notice boards**
Of approximate size 3'-0'' x 2'-0'' and 6'' deep
Made out of 19mm thick ply with fully glazed
Shutter in front and soft board with felt cloth
Lining at the back inclusive of good approved
Quality lock to this shutter, hinges, fixtures, Handle etc.
and front laminate/painted & Notice Board B.M. Cabin
complete As directed by B.M./ bank architect. 2.0 No.
16. Providing and Fixing in position **side units**
Made out of 19mm board with 1.0 mm
Laminate with slidding hinged shutters
(made out of 12mm thick ply with 1.0 mm
Thick laminate on it) complete with handles
Etc. Size 4'-0'' x 1'-6'' x 2'-6'' 2.0 No.
17. Providing and fixing **Column/Wall paneling**
Paneling all specification as per item no. 4 735.00 Sft.
18. Providing and fixing in position **Branch
Manager Table** (Size 6'-0'' x 3'-0'') made
Out of 19mm thick water proof board with
1.0 mm th. Laminated on all exposed surface
(others external surface shall be painted with
Two coats of enamel paint over one coat of
Primer) It shall have one unit on one side while
Provision to be made for pull out tray on slides.
The table to be finished in TW/H.W Lipping &
Godrej lock, handles footrest, latches all Complete. 1.0 No.



19. Providing and Fixing in position **Officer Table** (Size 5'-0''x2'-6'')made out of 19mm. Thk. Water proof board with 1.0 mm. th. Laminated on all exposed surface (others external Surface shall be painted with two coats of enamel Paint over one coat of primer) It shall have one Unit on one side while. 1.0 No.
20. Providing & fixing wooden **Filling Cabinet** 1'-6''deep to be fixed on the wall frame made out of 19mm thick commercial ply with siding hinge shutters made out of 12mm thick ply with 1.0mm laminate on the front & side other other internal surface to be painted as complete with handle, lock, wall catches etc. 110.00 sft
21. Meter Box Specification No.15 20.00 Sft
21. **False Ceiling (Armstrong)** Providing and fixing in position false ceiling in armstrong 600 x 600 x 15/16 mm dune supreme RH 99 prima tile with regular edge frame work as specified by armstrngcompany with suspenders making necessary frame work for A.C. Ducting for diffusers and light fitting. 650.00 Sft.
22. **False Ceiling (Gypsum)** Providing & fixing with necessary scaffolding frame in 22 guage GI channel /angle, placed at appropriate grid, fixed to RCC slab, beam, wall etc. with fasteners/screws finished with 12.0mm Gypsum sheets joints covered with POP slurry /tape. Rates shall include painting (One Coat of putty, one coat of primer coat and tow coats of acrylic paints.) Rates shall include providing necessary cut-outs & additional support frames for electrical fixtures, A.C. grills, vertical drop up to 1'6'' etc. item includes finishing with painting base work and finishing in plastic paint



of white colour. (Note:- No extra payment shall be given for design. However, the visible area of the vertical side at the intersection of Gypsum & Armstrong False ceiling shall be paid.)

450.00 Sft.

Note:- All Glass Etching & Bank Logo all Suitable Place

Total Rs. -----
GST 18% -----
Say GRAND TOTAL -----

(Rs. ----- Lacs ----- Thousand Only.)

Total Work Furnishing Rs. ----- + Total Work Electrical Rs. -----
Combined Total Work Furnishing & Electrical Rs. ----- (----- Lacs -----
Thousand ----- Hundred ----- Only



PROJECT - TENDER FOR ELECTRICAL/DATA CABLING WORKS.

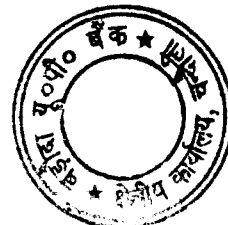
BANK - Baroda U.P. Bank

BRANCH -Nai Basti

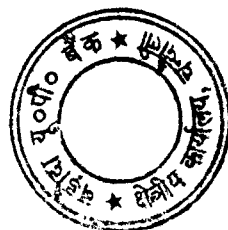
REGIONAL OFFICE- CHANDAULI

***ALL WORKS TO BE DONE AS PER TENDER CONDITIONS.**

DESCRIPTION OF ITEM	QTY	UNIT	RATE (Rs.)	AMOUNT (Rs.)
Installation of 200Amp Kit kat Fuse unit 3 nos with 200 Amp neutral link on wooden board (3' x 3') complete with connections (new).	1	Set		
<p>ELECTRICAL PANEL</p> <p>Design, manufacture, providing, storing & installing in position, effecting proper connection, testing and commissioning of panel made of 14 SWG, CRCA sheet steel. It shall be dust and vermin proof. It shall have compartmentalized construction with bus bar chambers, cable alley, cable glands plate etc. as required, duly painted from inside as well outside.</p> <p>It shall have the following - MAIN PANEL.</p> <p>1 No. 100 Amp. TPN, MCCB (18 KA breaking capacity), Busbars.</p> <p>100 Amp., 3 phase, 4 strips, 415 volts, 50 Hz. copper busbars with colour coded PVC heat shrinkable sleeves. Instruments.</p> <p>Multi function Meter for Voltage, Ampere, Power factor, KWH, Data 1 No. with CT 75/5</p> <p>Outgoing.</p> <p>5 Nos. 63 Amp. TP, MCB (For LDB, PDB, Branch UPS DB, ATM UPS DB and Spare Feeder)</p> <p>10 AMP DP MCB. 2 Nos (for Glow Sign board, and spare feeder)</p> <p>1 No., 100 Amp. Four Pole Change Over for D.G. Set. (Seperate from the panel)</p> <p>The design of panel should be got approved by the Architect before manufacturing.</p> <p>The job shall be completed, to the satisfaction of the Bank Engineer/Architect.</p>	1	Nos.		
UPS I/P, O/P AND DISTRIBUTION				
20/32 AMP industrial socket along with MCB for UPS I/P and O/P	2	Nos.		
12 way SPN db double door (1Nos 32A DPMCB and 10 Nos. 6 to 16A SPMCB) UPS Power Branch .	1	No.		
SITC of 63 Amp TPN MCB in Encloser complete in all respects as required. (UPS)	1	No.		
SITC of 63Amp Rotary Phase selector switch complete with RYB indication lifht in incloser complete in all respects as required.	1	Nos.		



RAW POWER & FAN, LIGHTING DB & AC DISTRIBUTION BOARD			
4 WAY TPN DB Double Door (1 No. 63 AMP TP MCB and 12 Nos. 6-32 AMP. SPMCB) (For AC, Light system, Power Points) all complete with blanking plates	3	Nos.	
CABLES			
3.5 Core 35.0 Sq.mm Aluminium Armoured Cable (Electric Meter to Electric Panel)	15	Mtr.	
4 X 6.0 Sq.mm Copper Wire + 1X 4.0 Sqmm copper earth wire in PVC Pipe fixing on walls or chassing the walls and making it good with cement mortar of 1:5 ratio including Connecting ,testing etc. compete (Panel to UPS Incomer, LDP, PDB and ATM UPS Incomer)	14	Mtr.	
Same as above but 4 x 10.00 Sqmm Copper Couductor Cable. (Kit Kat fuse unit to AC DB) complete with lugs.	16	Mtr.	
2 X 6.0 Sq.mm Copper Wire (ROTARY SWITCH TO UPS and UPS DB) + 1X 2.5 Sqmm copper earth wire in PVC Pipe fixing on walls or chassing the walls and making it good with cement mortar of 1:5 ratio including Connecting ,testing etc. compete	45	Mtr.	
2 X 2.5 Sq.mm Copper Wire (Electric Panel to Glow Sign Board) + 1X 1.5 Sqmm copper earth wire in PVC Pipe fixing on walls or chassing the walls and making it good with cement mortar of 1:5 ratio including Connecting ,testing etc. compete with lugs	18	Mtr.	
AC POINT			
Point Wiring with 2 No. 4.0 Sq.mm and 1 No. 2.5 Sq.mm Multistrand Copper Wire & 20/25 Amp. Metal clad plug & Socket DB complete in all respect as required by the Bank (for 1.0 & 2.0 Tr AC)	5	Nos.	
EARTHING			
PIP technology GEL type 50mmdia 3000mm long earth electrod.	3	Nos.	
12 SWG Bare Copper Earth Wire from earthing pit /Earth terminal to load point (UPS DB and Main DB etc)	22	Mtr.	
UPS POINT			
Supply & Installation of point wiring for Primary UPS or stabilized power plug points on workstations / table for computers using 3 X1.5 Sq.mm copper conductor multi starnd FR PVC sheathed flexible wire pulled through floor raceways/conduit and taken upto table top using PVC rigid or flexible conduits run within wooden/metal partitions. Each point consisting of 2 nos of 10A , 3 pin sockets & 1 No., 20A Switch with socket (Modular)with indicator, wired together forming one point. The earth wire of green color only.	7	Nos.	
RAW POWER POINT			



Supply & Installation of point wiring for Raw power plug points on workstations / table for computers using 3 X2.5 Sq.mm copper conductor PVC sheathed flexible wire pulled through already laid floor raceways and taken upto table top using PVC rigid or flexible conduits run within wooden/metal partitions. Each point consisting of 1 nos of 16A , 6 pin sockets & 1 No., 16A Switch (Modular), wired together forming one point. The earth wire of green color only.	5	Nos.		
LIGHT/FAN POINT				
Supply & Installation of concealed point wiring using 600v grade 1.5 Sq.mm copper conductor PVC insulated wires (with proper R,Y,B color code) pulled through heavy gauge PVC conduits laid concealed over false ceiling including 2 Nos. 2.5 sqmm circuit wires from the relevant DB and also including 2.5 sqmm green color copper earth wire and switch plate, switches, etc. as approved by the Bank's Engineer/Architect.				
Primary light points including the cost of 10 A modular switch	30	Nos.		
Ceiling Fan Point including the cost of 10A modular Switch along with 4/5 step electronic fan regulator.	2	Nos.		
Wall Fan Point along with 10 AMP modular switch	8	Nos.		
Exhaust Fan Point along with 10 AMP modular switch	1	Nos.		
6/10A Switch with 5pin 10A socket in light & fan board	5	Nos.		
DATA CABLING & POINT				
Supplying and laying of D-Link make CAT-6 (UTP) cable through trenches / conduits.				
Supplying and laying D-link make CAT-6 Cable complete with CAT-6 information outlet with plate & surface Box at individual Tables	7	Nos.		
Supplying and fixing of 2 mtr long crimped patch cord	7	Nos.		
24 Port D-Link Switch	1	No.		
SITC of 9U rack	1	No.		
FIXTURES				
Supply and Installation of Square light fitting (2' x 2') LED green square Philips. Supply and Installation of Square light fitting (2' x 2') LED green square Philips.	14	Nos.		
Down Lighter 1x12W LED Panel white	14	Nos.		
Tube Light(LED) - Patti Type. (18 watts)	4	Nos.		
1200mm Ceiling Fan	4	Nos.		
400mm Wall Mounted Fan	6	Nos.		
Exhaust Fan (9") Metal Body	1	Nos.		
Call Bell Wireless.	1	No.		
1x 7 W LED Bulb with holder	4	No.		
			TOTAL (Rs.)	
			GRAND TOTAL	
NOTE :: All work should be done as per Bank's Specification.				



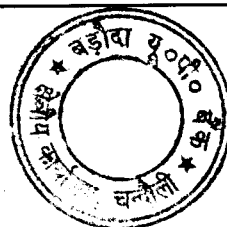
PROJECT - SPECIFICATION FOR FURNITURE & ELECTRICAL WORKS.		
BANK - BARODA U.P. BANK		
BRANCH- NAI BASTI		
REGIONAL OFFICE- CHANDAULI		
*ALL WORKS TO BE DONE AS PER TENDER CONDITIONS.		
A	FURNITURE ITEMS	
1	LAMINATES (IS-2046) / VENEER	GREEN LAM / CENTURY / ARCHID / FORMICA / SUNDEK OR APPROVED EQUIVALENT
2	COMMERCIAL PLY (IS-303) / WATERPROOF PLY (IS-710) / BLOCK BOARD (IS-1659) / FLUSH DOOR (IS- 2202)	ARCHID/ CENTURY / EURO / GREEN OR APPROVED EQUIVALENT BY EIC.
3	ADHESIVES	FEVICOL / BLUECOAT/ VAMICOAL
4	LOCKS	GODREJ
	MULTIPURPOSE GROUP LOCK	E-MPL1-22 / E-MPL1C-22 (EBCO)
	NIGHT LATCH	8812 (GODREJ)
	CYLINDRICAL LOCK (SS MATT FINISH)	3792-WITH KEY AND 3786-KEYLESS (GODREJ) / C120SS (EUROPA)
	MORTISE DEAD LOCK (TWO WAY)	8815(GODREJ)
	MORTISE LOCK WITH DOOR HANDLE	MATIZ 8083(GODREJ)
5	DRAWER CHANNELS	GODREJ/ HATTICH/ OZONE
	TELESCOPIC CHANNELS (ZINK PLATED)	STDS35(I)35/ STDS25(I)35/ STDS50(I)35/ STDS60(I)35 (EBCO)
	BOTTOM CHANNELS (POWDER COATED)	BMDS 35/ BMDS 37/ BMDS 55/ BMDS 60 (EBCO)
6	GENERAL HARDWARE	SS MATT FINISH
	DOOR STOPPER	I) BLACK/IVORY/BROWN/SILVER COLOR POWDER COATED DS1 (EBCO) II) SPRING TYPE BLACK/BROWN/IVORY COLOR POWDER COATED (ECGL'S STERLING)
	HINGES	I) 3"/4"/5"/6" 1.8MM TH. SS MATT FINISH (SUZU) II) 75X12X19 1.2 MM TH. SS MATT FINISH FOR STORAGE (SUZU) III) AUTO CLOSE HINGES – SLIP ON HINGE- EURO / CLICK ON HINGE-I (EBCO) FOR STORAGE
	HANDLES 'D' OR 'C' TYPE	1) 3"/4"/6"10MM DIA SS 202 MATT FINISH (ANJALI)
	TOWER BOLT	3"/4"/6"/8" BRASS EXTRUDED SS MATT FINISH (OSWAL)

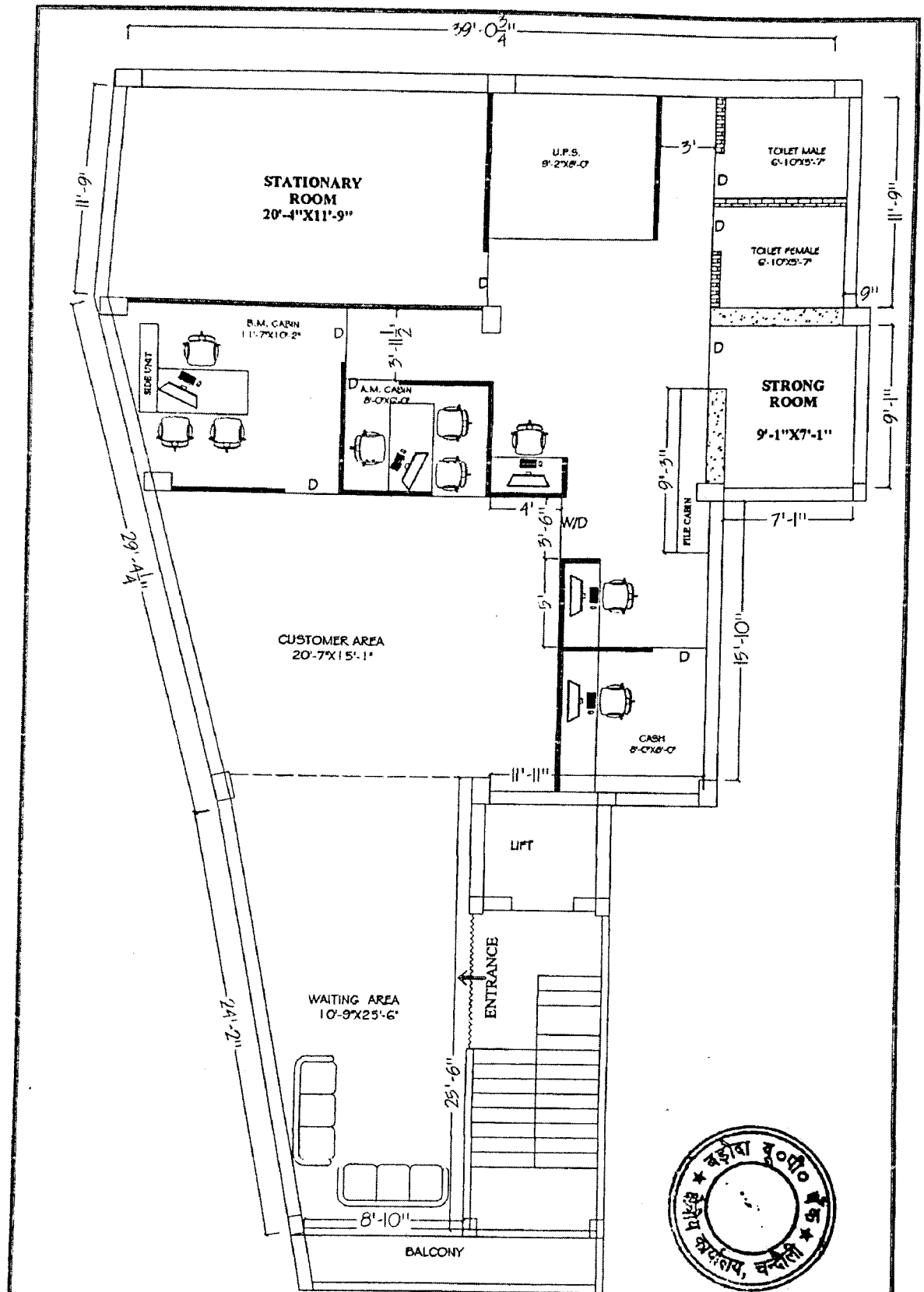


	SLIDING CHANNEL	EBCO MAKE APPROVED BY ARCHITEC/BANK.
7	FLOOR SPRING	
	60 KG	7477 (GODREJ) / M-74 (HARDWYN)
	80 KG	8293 (GODREJ) / M-74 (HARDWYN)
	100 KG	8294 (GODREJ) / M-76 (HARDWYN)
8	DOOR CLOSER	
	60 KG	DOUBLE SPEED 8292-SILVER, 7325- GOLDEN (GODREJ) / SCORPIO (HARDWYN)
	FIRE RATED 60 KG	1938 (GODREJ) / TRITON (HARDWYN)
9	PATCH FITTINGS FOR DOOR AND FIXED GLASS PARTITION (TOP/BOTTOM PATCH, PIVOT, PATCH LOCK, L ARM, L CONNECT, CONNECTOR, FLOOR SPRING HANDLE PLASTIC PROFILE)	GODREJ / XL C SERIES(DORMA) / OPF SERIES (OZONE) OR APPROVED EQUIVALENT
10	GLASS / MIRRORS	SAINT GOBAIN / MODI
11	ALUMINUM SECTION	JINDAL / INDAL / BANCO
12	WINDOW BLINDS	VISTA / AEROLUX/HUNTER DUGLUS / MAC
13	POLISH / PAINT	ASIAN PAINTS / BERGER / NEROLAC
14	PARTICLE BOARDS	NOVAPAN / DECO BOARD
15	COMPUTER ACCESSORIES	
	CPU HANGER/ SHELF	SIDE MOUNTED IS CPU HL SM (INNOFIT) /CPUSM(EBCO),
	CABLE MANAGER (60MM)	I) METAL - CO60ZN1(EBCO) II) PVC - CO 60 (EBCO) BLACK/IVORY/GREY COLOR
16	ACP PANEL	TIMEX / ALU DECOR / EURO OR APPROVED EQUIVALENT
19	WHITE FILM FOR GLASS	CRYSTAL / SONA MAKE VINYL FROSTED FILM
B	PAINTS	ICI, ASIAN,DULUX, BERGER, NEROLAC, JOHONSON & NICOLSAN
1	ANTI CORROSIVE PAINT	TIKITAR, FINCOAT
2	RED OXIDE	ASIAN, DULUX,NEROLAC
3	POLISH	ASIAN MELAMINE
4	EXTERIOR PAINTS	DULUX WEATHERSHIELD OR APP. EQUIVALENT
5	ENAMEL PAINT	ICI, DULUX, ASIAN, NEROLAC
C	FALSE CEILING	
1	GYPSUM BOARD	GYPROC (SAINT GOBAIN)
2	FRAMING WITH COMPLETE SYSTEM	GYP STEEL ULTRA (SAINT GOBAIN), RAMCO FUJI
3	HILUX BOARDS	RAMCO OR APPROVED EQUIVALENT
4	MINERAL FIBRE TILES CEILING WITH COMPLETE SYSTEM	ARMSTRONG/SAINT GOBAIN/USG



D	APPROVE MAKE LIST FOR ELECTRICAL	
1	PVC rigid conduits & Accessories:	1.5 mm thick (MMS) ISI and FIA approved - Precision / Vraj / Nihir / BLP / PFI / Anchor / Polycab make. (Only white coloured pipes FRLS type to be used.).
2	L.T. Cables:	Havells / KEI / Polycab / R. R. Kable / Finolex.
3	Wires (FRLS):	Havells / KEI / Polycab / R. R. Kable / Finolex.
4	Main Distribution Boards:	MDS Legrand (Lexic) / Hager / Crabtree XPOA / Schneider (Eazy 9) / L & T EXORA / C & S Wintrip / Siemens Bitaguard.
5	ELCB / RCCB / Miniature Circuit Breaker:	MDS Legrand (Lexic) / Hager / Crabtree XPOA / Schneider (Eazy 9) / L & T EXORA / C & S Wintrip / Siemens Bitaguard.
6	Switch gears:	MDS Legrand (Lexic) / Hager / Crabtree XPOA / Schneider (Eazy 9) / L & T EXORA / C & S Wintrip / Siemens Bitaguard.
7	Change Over Switch:	HPL Socomac/ Havells / L & T / Hager.
8	Domestic fittings:	
	a) All Switching Modular Accessories.	MK Wrapped Wround Plus / Schneider Livia / L & T entis / Crabtree Verona / Salzer Elite / Legrand Myris / C & S Divino / SSK Ace.
	b) Holders / ceiling roses	Anchor or equivalent approved make.
	c) Adhesive Tape	Bhor (Steel Grip) or approved .
9	10 - 30 A Polycarbonate Socket & Top:	MDS Legrand (Lexic) / Hager / Crabtree XPOA / Schneider (Eazy 9) / L & T EXORA / C & S Wintrip / Siemens Bitaguard.
10	Telephone Wires / Cable:	Finolex / R. R. Kable / Havells / L & T / Polycab.
11	Telephone tag block:	Krone make.
12	Cable Lugs:	Dowell / Lotus / Jainson / 3 D.
13	Cable gland Single / Double Compression:	HMI / Comet / 3D.
14	Ammeter / Voltmeter:	AE / HPL / MECO / Enercon make.
15	Selector switches:	L & T salzer / Kaycee make.
16	Indicator lamps:	LED type Teknic / Precifine/ Binay.
17	Connector strips:	Wago / Elmex make.
18	Lighting Fixtures :	Wipro / Philips / GE / Crompton. only
19	Exhaust fan (Light duty):	Khaitan / Crompton / Havells.
20	Ceiling Fan (5 star rated):	Crompton (High Breeze Plus) / Havells.
21	Wall mounted Fan (5 star rated):	Crompton (High Flow Wave) / Havells.
22	Data Cable - I / O Unit:	D - Link / Digi Link.





PROPOSED PLAN FOR:-
 BARODA U.P. BANK, BRANCH- NAIBASTI,
 R.O. - CHANDAULI
 DRW. TITLE :- FIRST FLOOR
 PLAN :- 1a INTERIOR PLAN



Ar. RAJESH KUMAR SINGH (B.Arch)

VISION ARCH

Plot no. 166, V.D.A. Colony, Badalpur
 (Chandmari) Varanasi M.No.9450165944
 E.MAIL:- VARCH0036@GMAIL.COM