

**Schedule of Quantity Tender for furnishing work of Baroda U.P. Bank Vikas Bhawan  
Branch Dist-Prayagraj R.O. Prayagraj**

S.No.	Items of work	Qty	Unit	Rate	Amount.(Rs.)
1.	Changing of Aluminum partition's Board to new 10mm ply & Pasting of 1mm Thk. Laminate over it.	190	Sqft		
2.	Repairing & Changing of Laminate of Counters & Table				
(a)	Cash Counter	2	Nos.		
(b)	Low ht. Counter	3	Nos.		
(c)	Tables	2	Nos.		
(d)	Side Tables	2	Nos.		
3.	P/F of Wooden wall Paneling	1200	Sqft		
4.	12mm Glass Barrier	30	Sqft		
5.	P/F 1.5mm PVC Flooring	1052	Sqft		
6.	P/F of Low Ht. (4'-6" High) partly glazed Laminated portion in /R.D.O Cabin The under framing shall be of 2"x2" sal wood (Anti termite Treatment) for under framing at A max. Distance of 2' in each direction. 6mm th. Waterproof ply shall be fixed on two side and 1mm the laminated shall be pasted over it with Chemical adhesive. Provision shall be made for Passage of electric / data cable and switch board. T.W molding melamine polished shall be fixed Wherever necessary. Bottom 4" width shall Have skirting upper 1'-6" height shall have 5mm th. Plane glass.				
		95.00	Sft.		

- |     |   |            |
|-----|---|------------|
| 7.  | P/F of Low Ht. (4'-6'' High) Laminated portion<br>For <b>UPS Space</b> The under framing shall be of<br>2''x2''sal wood (Anti termite Treatment) for<br>Under framing at a max. distance of 2' in each<br>Direction . 6mm th. Waterproof ply shall be<br>Fixed on two side and 1 mm the laminated shall<br>Be pasted over it with chemical adhesive.  | 75.0 Sft.  |
| 8.  | P/F Low ht. partition Wicket gate all<br>Specification as item No. 6.   | 48.00 Sft. |
| 8.  | P/F <b>Godrej Night latch.</b>  | 2.0 Nos.   |
| 9.  | P/F f <b>Godrej mortic lock</b>   | 2.0 No     |
| 10. | P/F of <b>Door closer</b> I.S.I mark  | 4.0 No.    |
| 11. | Providing and fixing <b>Writing desk</b> in<br>Position box type Wooden writing in public<br>Space of approximate size 4'-0'' x 2'-0''<br>Made out of 19mm thick good approved<br>Quality ply with 6'' to 9'' wide pigeon hole<br>Type compartments in the front façade boxing<br>For keeping pay-in-ship, book literature etc.<br>These writing table's must have laminates<br>1.0 mm thick on top writing desk and two side<br>of the boxes. With beeding lipping, moulding<br>and painting / polishing complete. | 1.0 No.    |
| 12. | <b>Suggestion Box</b>   | 1.0 No.    |
| 13. | <b>Check drop Box</b>   | 1.0 No.    |
| 15. | Providing and fixing in position <b>Notice boards</b><br>Of approximate size 3'-0'' x 2'-0'' and 6'' deep<br>Made out of 19mm thick ply with fully glazed<br>Shutter in front and soft board with felt cloth  |            |

- Quality lock to this shutter, hinges, fixtures,  
Handle etc. and front laminate/painted complete  
As directed by bank architect. 1.0 No.
19. **Providing and Fixing in position Officer Table** (Size 5'-0"x2'-6") made out of 19mm.  
Thk. Water proof board with 1.0 mm. th.  
Laminated on all exposed surface (others external  
Surface shall be painted with two coats of enamel  
Paint over one coat of primer ) It shall have one  
Unit on one side while. 1.0 No.
22. **False Ceiling (Armstrong)** Providing and fixing  
in position false ceiling in armstrong 600 x 600 x  
15/16 mm dune supreme RH 99 prima tile with  
regular edge frame work as specified by  
Armstrong company with suspenders making  
necessary frame work for A.C. Ducting for  
diffusers and light fitting. 650.00 Sft.
23. **False Ceiling (Gypsum)** Providing & fixing with  
necessary scaffolding frame in 22 gauge GI channel  
/angle, placed at appropriate grid, fixed to RCC slab,  
beam, wall etc. with fasteners/screws finished with 12.  
0mm Gypsum sheets joints covered with POP slurry  
/tape. Rates shall include painting (One Coat of putty,  
one coat of primer coat and tow coats of acrylic paints.)  
Rates shall include providing necessary cut-outs &  
additional support frames for electrical fixtures, A.C.  
grills, vertical drop up to 1'6" etc. item includes finishing  
with painting base work and finishing in plastic paint  
of white colour. (Note:- No extra payment shall be given

for design. However, the visible area of the vertical side  
at the intersection of Gypsum & Armstrong  
False ceiling shall be paid.)

450.00 Sft.

-----  
**Total Rs.** -----

**GST 18%** -----

**GRAND TOTAL** -----

( Rs. --- Lacs --- Thousand --- Only.)

**For :**

**Detail Tender for Electrical work of Vikas Bhawan  
Branch-Baroda U.P. Bank Ro- Prayagraj**

Sl. No.	Particulars	Qty.	Unit	Rate/Unit Rs. P.	Amount Rs. P.
1.	Supplying and fixing recessed mounting fittings with suitable for 35/40 watt LED 600x600 Square fitting with PDC Aluminum die cast housing with poly Corbonet diffuser, in built electrical 110 LM Per watt protection like over voltage, short circuit, over loading, mis wiring for additional safety precaution rated light 50000 hours, (Guaranteed for above LED light is three month from period of installation) Make Crompton Cat No. LCTLRNE-36-FO-CDL, LED 36W or Philips make Model No. 380 LED 42S DN (38 W) Wipro Cat- Garnet Slim LED D414065 (All complete with Lamps	10	No		
2.	Providing & Fixing of wall mounted fans (400dia) complete with 1.5 Sq mm wiring and modular switches. The work to include making hole in wall	5	No		
3.	Supplying and Fixing recessed mounting fittings with suitable for 18/20 Watt LED down Light fitting with PDC Aluminium diecast housing with Poly Corbonet diffuser, in built electrical protection like over voltage, short circuit, over loading, mis wiring for additional safety precaution rated light 50000 hours, (Guaranteed for above LED light is three month from period of installation) Philips make DN195BLED 20F (20 WATT) 6500 KA< Crompton Cat No. LCBE18 – CDL- 18 Watt & Wipro cat- Garnet slim D7112060/40/30 6500 KA (complete with all)	15	No		
4.	S/F of A.C. point wiring with 2x 4 sq mm+1x1.5 sq mm copper wire and metal socket MCB 20 Amp. complete For 1.5 Ton/	4	No		

				<b>Total Rs.</b>	-----
				<b>GST 18%</b>	-----
	<b>GRAND TOTAL (Rs. ---- Thousand Only.)</b>				-----

For :

**PROJECT - SPECIFICATION FOR FURNITURE & ELECTRICAL WORKS.**

**BANK - BARODA UP BANK**

**BRANCH -VIKAS BHAWAN**

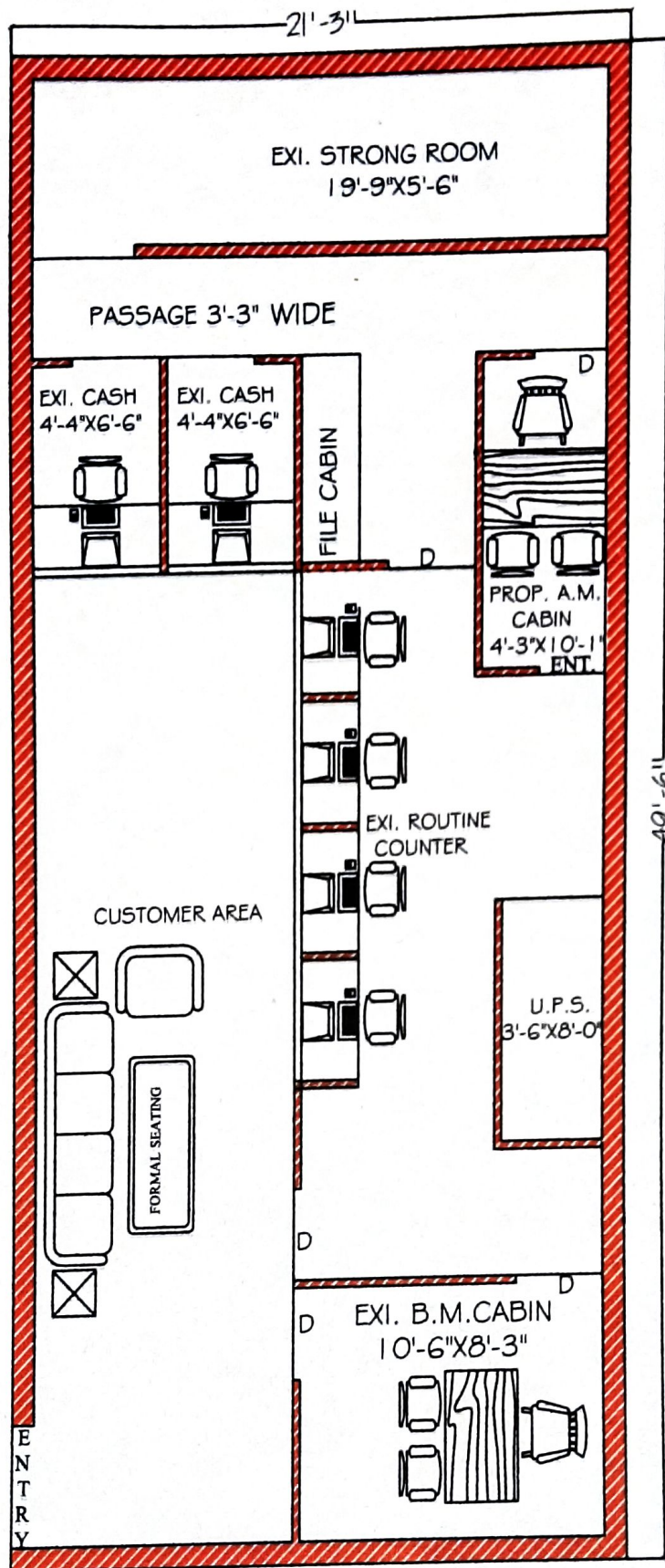
**REGIONAL OFFICE- PRAYAGRAJ**

**\*ALL WORKS TO BE DONE AS PER TENDER CONDITIONS.**

A	FURNITURE ITEMS	
1	LAMINATES (IS-2046) / VENEER	GREEN LAM / CENTURY / ARCHID / SAMRAT / FORMICA / SUNDEK OR APPROVED EQUIVALENT
2	COMMERCIAL PLY (IS-303) / WATERPROOF PLY (IS-710) / BLOCK BOARD (IS-1659) / FLUSH DOOR (IS- 2202)	ARCHID/ SAMRAT / CENTURY / EURO / GREEN OR APPROVED EQUIVALENT BY EIC.
3	ADHESIVES	FEVICOL / BLUECOAT/ VAMICOAL
4	LOCKS	GODREJ
	MULTIPURPOSE GROUP LOCK	E-MPL1-22 / E-MPL1C-22 (EBCO)
	NIGHT LATCH	8812 (GODREJ)
	CYLINDRICAL LOCK (SS MATT FINISH)	3792-WITH KEY AND 3786-KEYLESS (GODREJ) / C120SS (EUROPA)
	MORTISE DEAD LOCK (TWO WAY)	8815(GODREJ)
	MORTISE LOCK WITH DOOR HANDLE	MATIZ 8083(GODREJ)
5	DRAWER CHANNELS	GODREJ/ HATTICH/ OZONE
	TELESCOPIC CHANNELS (ZINK PLATED)	STDS35(I)35/ STDS25(I)35/ STDS50(I)35/ STDS60(I)35
	BOTTOM CHANNELS (POWDER COATED)	BMDS 35/ BMDS 37/ BMDS 55/ BMDS 60 (EBCO)
6	GENERAL HARDWARE	SS MATT FINISH
	DOOR STOPPER	I) BLACK/IVORY/BROWN/SILVER COLOR POWDER COATED DS1 (EBCO) II) SPRING TYPE BLACK/BROWN/IVORY COLOR POWDER COATED (FCGL'S STERLING)
	HINGES	I) 3"/4"/5"/6" 1.8MM TH. SS MATT FINISH (SUZU) II) 75X12X19 1.2 MM TH. SS MATT FINISH FOR STORAGE (SUZU) III) AUTO CLOSE HINGES – SLIP ON HINGE- EURO / CLICK ON HINGE-I (EBCO) FOR STORAGE
	HANDLES 'D' OR 'C' TYPE	1) 3"/4"/6"10MM DIA SS 202 MATT FINISH (ANJALI)

	TOWER BOLT	3"/4"/6"/8" BRASS EXTRUDED SS MATT FINISH (OSWAL)
	SLIDING CHANNEL	EBCO MAKE APPROVED BY ARCHITEC/BANK.
7	FLOOR SPRING	
	60 KG	7477 (GODREJ) / M-74 (HARDWYN)
	80 KG	8293 (GODREJ) / M-74 (HARDWYN)
	100 KG	8294 (GODREJ) / M-76 (HARDWYN)
8	DOOR CLOSER	
	60 KG	DOUBLE SPEED 8292-SILVER, 7325- GOLDEN (GODREJ) / SCORPIO (HARDWYN)
	FIRE RATED 60 KG	1938 (GODREJ) / TRITON (HARDWYN)
9	PATCH FITTINGS FOR DOOR AND FIXED GLASS PARTITION (TOP/BOTTOM PATCH, PIVOT, PATCH LOCK, L ARM, L CONNECT, CONNECTOR, FLOOR SPRING, HANDLE, PLASTIC PROFILE)	GODREJ / XL C SERIES(DORMA) / OPF SERIES (OZONE) OR APPROVED EQUIVALENT
10	GLASS / MIRRORS	SAINT GOBAIN / MODI
11	ALUMINUM SECTION	JINDAL / INDAL / BANCO
12	WINDOW BLINDS	VISTA / AEROLUX/HUNTER DUGLUS / MAC
13	POLISH / PAINT	ASIAN PAINTS / BERGER / NEROLAC
14	PARTICLE BOARDS	NOVAPAN / DECO BOARD
15	COMPUTER ACCESSORIES	
	CPU HANGER/ SHELF	SIDE MOUNTED IS CPU HL SM (INNOFIT) /CPUSM(EBCO) ,
	CABLE MANAGER (60MM)	I) METAL - CO60ZN1(EBCO) II) PVC - CO 60 (EBCO) BLACK/IVORY/GREY COLOR
16	ACP PANEL	TIMEX / ALU DECOR / EURO OR APPROVED EQUIVALENT
19	WHITE FILM FOR GLASS	CRYSTAL / SONA MAKE VINYL FROSTED FILM
B	PAINTS	ICI, ASIAN,DULUX, BERGER, NEROLAC, JOHONSON & NICOLSAN
1	ANTI CORROSIVE PAINT	TIKITAR, FINCOAT
2	RED OXIDE	ASIAN, DULUX,NEROLAC
3	POLISH	ASIAN MELAMINE
4	EXTERIOR PAINTS	DULUX WEATHERSHIELD OR APP. EQUIVALENT
5	ENAMEL PAINT	ICI, DULUX, ASIAN, NEROLAC
C	FALSE CEILING	
1	GYPSUM BOARD	GYPROC (SAINT GOBAIN)
2	FRAMING WITH COMPLETE SYSTEM	GYP STEEL ULTRA (SAINT GOBAIN), RAMCO FUJI
3	HILUX BOARDS	RAMCO OR APPROVED EQUIVALENT
4	MINERAL FIBRE TILES CEILING WITH COMPLETE SYSTEM	ARMSTRONG/SAINT GOBAIN/USG
D	APPROVE MAKE LIST FOR ELECTRICAL	
1	PVC rigid conduits & Accessories:	1.5 mm thick ( MMS ) ISI and FIA approved - Precision / Vraj / Nihir / BLP / PFI / Anchor / Polycab make. ( Only white coloured pipes FRLS type to be used. )

2	L.T. Cables:	Havells / KEI / Polycab / R. R. Kable / Finolex.
3	Wires (FRLS):	Havells / KEI / Polycab / R. R. Kable / Finolex.
4	Main Distribution Boards:	MDS Legrand (Lexic ) / Hager / Crabtree XPOA / Schneider ( Eazy 9 ) / L & T EXORA / C & S Wintrip / Siemens Bitaguard.
5	ELCB / RCCB / Miniature Circuit Breaker:	MDS Legrand (Lexic ) / Hager / Crabtree XPOA / Schneider ( Eazy 9 ) / L & T EXORA / C & S Wintrip / Siemens Bitaguard.
6	Switch gears:	MDS Legrand (Lexic ) / Hager / Crabtree XPOA / Schneider ( Eazy 9 ) / L & T EXORA / C & S Wintrip / Siemens Bitaguard.
7	Change Over Switch:	HPL Socomac/ Havells / L & T / Hager.
8	Domestic fittings:	
	a) All Switching Modular Accessories.	MK Wrapped Wround Plus / Schneider Livia / L & T entlis / Crabtree Verona / Salzer Elite / Legrand Myris / C & S Divino / SSK Ace.
	b) Holders / ceiling roses	Anchor or equivalent approved make.
	c) Adhesive Tape	Bhor (Steel Grip) or approved .
9	10 - 30 A Polycarbonate Socket & Top:	MDS Legrand (Lexic ) / Hager / Crabtree XPOA / Schneider ( Eazy 9 ) / L & T EXORA / C & S Wintrip / Siemens Bitaguard.
10	Telephone Wires / Cable:	Finolex / R. R. Kable / Havells / L & T / Polycab.
11	Telephone tag block:	Krone make.
12	Cable Lugs:	Dowell / Lotus / Jainson / 3 D.
13	Cable gland Single / Double Compression:	HMI / Comet / 3D.
14	Ammeter / Voltmeter:	AE / HPL/MECO/ Enercon make.
15	Selector switches:	L & T salzer / Kaycee make.
16	Indicator lamps:	LED type Teknic / Precifine/ Binay.
17	Connector strips:	Wago / Elmex make.
18	Lighting Fixtures :	Wipro / Philips / GE / Crompton. only
19	Exhaust fan (Light duty):	Khaitan / Crompton / Havells.
20	Ceiling Fan ( 5 star rated ):	Crompton ( High Breeze Plus ) / Havells.
21	Wall mounted Fan ( 5 star rated ):	Crompton ( High Flow Wave ) / Havells.
22	Data Cable - I / O Unit:	D - Link / Digi Link.



EXISTING / PROPOSED PLAN FOR:-  
BARODA U.P. BANK VIKAS BHAWAN,  
PRAYAGRAJ

DRW. TITLE :- FIRST FLOOR INTERIOR PLAN



Ar. RAJESH KUMAR  
SINGH, B Arch  
VISION ARCH Shi-15/160-1k,  
Bharlai, Varanasi  
M.No.9450165944  
E.MAIL:- VARCH0036@GMAIL.COM